

Asterina lüderitziana,
eine neue Art aus Südwest-Afrika.

Von

Dr. L. Döderlein, Prof. in Strassburg i. E.

Mit Tafel II.

Durch Herrn E. Lampe wurde mir aus dem naturhistorischen Museum in Wiesbaden eine kleine Sammlung von Echinodermen aus der Lüderitzbucht (Deutsch-Südwest-Afrika) zur Bestimmung übergeben, die dies Museum von Herrn C. Berger erhalten hatte.

Ich fand darunter ausser *Protoцентrotus angulosus* (Leske), *Cribrella ornata* (Perrier), *Asterina exigua* (Lamarck) noch eine weitere Art von *Asterina*, die ich mit keiner der mir bekannten Arten dieser Gattung glaube identifizieren zu dürfen.

***Asterina lüderitziana* nov. sp.**

Diagnose: 5 Arme. $R = 2r$. Zwei Reihen von Furchenstacheln, die innere mit je 3—4 schlanken, die äussere mit je 2 dickeren und grösseren Stacheln. Ventrolateralplatten mit meist je 3 langen, die Nachbarplatte überragenden Stacheln in einer Querreihe. Dorsalplatten mit sehr kurzen, dicken, auf den grösseren Platten meist zweireihig angeordneten Stacheln.

Beschreibung.

Fünf Arme. Der grosse Radius erreicht etwa die doppelte Länge des kleinen. Der Körper der trockenen Exemplare ist mäfsig flach, die Dorsalseite der Arme etwas gewölbt. Die Seiten sind stark eingebuchtet unter Andeutung eines stumpfen Winkels.

Das Skelet der Rückenseite zeigt in der Mitte der Scheibe zahlreiche, sehr kleine Kalkkörperchen, umgeben von einer Anzahl grosser

Platten, die teils gerade, teils (Radialplatten) winklig gebogen sind. Von diesem Ring grosser Platten aus erstrecken sich in der Mittellinie der Interradien 3 bis 4 Paare grösserer Platten bis zur Mitte zwischen Zentrum und Rand; ferner von den winkelig gebogenen Radialplatten aus, der Mittellinie der Arme entsprechend, je eine Reihe etwas grösserer Plättchen, deren Gestalt dem Flugbild eines Vogels gleicht. Gegen das Ende der Arme werden diese Lophialplatten undeutlich. Zu beiden Seiten dieser Lophialreihe finden sich, parallel zu ihr verlaufend, etwa 8 Reihen halbmondförmig erscheinender Plättchen, die die Seiten der Arme bedecken und von der interradiären Mittellinie ihren Ausgang nehmen. Zwischen all diesen Platten liegen Papularfelder für eine oder mehrere Papulä, die wieder von einer Anzahl kleinster Kalkkörperchen bedeckt sind. Die grösseren Platten sind tatsächlich sternförmig, liegen aber schuppenförmig über einander und nur ihr frei liegender Teil hat die oben angegebene Gestalt. Diese grösseren Platten erreichen aber den Rand des Körpers nicht, sondern sind von ihm durch einen Saum von kleinen Schüppchen getrennt, welche 3 bis 5 regelmässige Reihen bilden und im Gegensatz zu den übrigen Dorsalplatten keine Lücken für Papulä zwischen sich lassen.

Die Ventrolateralplatten bilden etwa 10 Reihen von Plättchen, die von innen nach aussen immer kleiner werden.

Die Madreporplatte ist sehr viel grösser als eine der Dorsalplatten und liegt interradiäler dem Zentrum etwas näher als dem Aussenrand; sie ragt bei trockenen Exemplaren weit hervor.

Die Dorsalseite ist ziemlich gleichmässig bedeckt von kurzen, plumpen, rauhen Stachelchen: sie sind etwa dreimal so lang als dick und zeigen ein abgerundetes, oft etwas verdicktes Ende: nur die dem Rande genäherten enden spitz. Sie finden sich auf sämtlichen Platten, selbst die kleinsten, die Porenfelder bedeckenden Plättchen tragen solche. Je nach der Grösse der Platte finden sie sich darauf in verschiedener Anzahl, nur 2 oder 3 auf den kleinsten Plättchen, in grösserer Anzahl auf den grösseren Platten, hier fast stets deutlich zweireihig angeordnet. Auf den kleinsten Plättchen nehmen diese Stachelchen gewöhnlich die Form von zweiklappigen, selten von dreiklappigen Pedicellarien an.

Die Ventrolateralplatten tragen verhältnismässig lange, stabförmige Stachelchen, die die benachbarten Platten überragen, meist je drei in einer Querreihe stehend; die grössten Platten nahe dem Munde tragen 5, selbst 6 Stacheln. Nach dem Rande zu werden die Stacheln kürzer.

Dicht am Rande, wo sie am kürzesten sind, treten sie in grösserer Anzahl auf je einem Plättchen auf und bilden zweireihige Büschel; sie vermitteln so den Übergang zu den Dorsalstacheln.

Die Furchenstacheln stehen auf den Adambulacralplatten in zwei Längsreihen. In der Tiefe der Furchen finden sich auf jeder Platte je drei, selten vier schlanke, nach dem Ende zu sich verjüngende Stacheln, deren mittelster der längste ist, während der Aussenrand der Platte je zwei gleich grosse Stacheln zeigt, die dicker, länger und von zylindrischer Gestalt sind, mit abgerundetem Ende. Sie sind etwas grösser als die benachbarten Ventrolateralstacheln.

Die Farbe der trockenen Exemplare ist ein helles Orange.

	a	b	c
R	38 mm	41 mm	43 mm
r	19 mm	21 mm	24 mm
Madreporenplatte	4,3 mm		4 mm
Breite des porenfreien Randes	3,5 mm		

Figurenerklärung.

Tafel II:

Asterina liederitziana.

- Fig. 1. Oberseite, z. T. von Stacheln entblösst, um das Skelet sichtbar zu machen. $\times 1\frac{1}{4}$.
- Fig. 2. Unterseite, ebenso. $\times 1\frac{1}{4}$.
- Fig. 3. Stacheln der Dorsalplatten; einige von ihnen zeigen pedicellarienartige Anordnung. $\times 8$.
- Fig. 4. Furchenstacheln und Ventrolateralstacheln. $\times 8$.

A remarkable new Gecko from South-Africa and
a new *Stenocercus*-species from South-America
in the Natural Museum in Wiesbaden.

By

Lars Gabriel Andersson, Stockholm.

With plate III.

Among a collection of reptiles and batrachians which was sent to me for determination from Mr. Ed. Lampe, Custos of the Natural Museum in Wiesbaden, there were two new species: a remarkable gecko from South-Africa, apparently representing a new genus, and a new *Stenocercus*-species from the highlands of Peru. Some notes on a few other species are also added; besides, I am able to state that the species *Paludicola alpina*, established by myself in 1906, is identical with *P. borelli* Per. All the specimens from South-America are collected by Mr. K. Seyd in the year 1907.

Palmatogecko Nov. genus.

A new genus of the family Geckonidae. Digits almost to the points included in a thick skin, forming a large palmar surface, below and above densely covered with small uniform granules without any traces of lamellae; the short free distal joint with a faint obtuse claw. The whole animal uniformly granulated. Eyelid distinct all around the eye; pupil vertical. Male without praeanal and femoral pores.

Palmatogecko rangei n. sp.

Plate III, Fig. 1 a—c.

Head large, oviform; nose broad, triangular, a little longer than the diameter of the orbit, which is as long as the distance between eye and ear: ear-opening small, oval, only one-third of the eyeball. Nostrils

on the upper part of the nose, one-third nearer the tip of the snout than the orbit, swollen, and pierced between two larger raised posterior and two smaller anterior nasals. Forehead and the interorbital space with a longitudinal groove. Temporal region thick and swollen; the greatest breadth of the animal is at the temples. Body and limbs slender. On the hand the free distal joints are comparatively long, on the 3th finger as long as the diameter of the ear-opening; a low ridge limits the palmar surface behind, giving it a scooplike appearance. On the foot the free distal joints are considerably shorter; the outer toe, to some extent separated from the broad disc formed by the four other toes, makes the hind rim of the deeply concave palmar surface. A broad but low rostral in contact with a regular six-sided internasal: 14—16 upper labials, 12 lower labials; a large oval mental, no chin-childs; all other scales small and granulated, except a row of ten pointed conical tubercles on each side the thick base of the tail, probably a male-character. Greyish white above, head and tail lighter than body; two faint dark stripes on the sides of the back, vanishing on the base of the tail; several faint cross bands unite the longitudinal stripes: above the ear a dark transversal spot, and on the nose a semicircular streak running behind the nostrils to below the eyes; the lower parts of the sides between the limbs, a triangular patch in front of the shoulder, the angle between thighs and tail, and the eyelid citrine; lower parts white, greyish white on the head.

Measurements: Total length 110 mm: from nose to ear 17,5 mm; diameter of the orbit 6 mm, greatest breadth of head 14 mm, length of humerus 9 mm, from elbow to the tips of toes 17 mm, length of femur 12 mm, from knee to tips of toes 20 mm.

This singular gecko is from Lüderitzbucht in the German South-West Africa and collected by Dr. P. Range; the colour, the large palmar surfaces and the general appearance indicate its occurrence in arid regions: in habit it rather much resembles another sand-gecko from South-Africa. *Ptenopus garrulus*, also collected at the same place, to which it probably is related, but the large palmar surfaces, formed as broad adhesive organs, seem to indicate that its habits at least to some extent are different: perhaps it may be living on rocks, but without knowing the nature of the place where it is collected, I do not find it proper to go further into the matter.

Stenocereus seydi n. sp.

Plate III, fig. 1 and 2.

No pterygoid teeth, no denticulation on the anterior border of the ear. Nostril large, above the canthus rostralis, directed upwards. Interorbital space slightly grooved; supraocular region with four or five longitudinal series of scales; the scales of the two median rows are much larger than those of the lateral rows and about twice as broad as long. All the plates of the head, especially on the hind part, distinctly corrugated. Temporal scales keeled; four upper and five lower labials: four pairs of postgulars; the first in contact with each other. A distinct dorsal denticulation, disappearing at the middle of the tail. A fold with raised pointed scales runs from the upper angle of the ear along the sides of the body to the base of the tail, where it vanishes. A distinct antehumeral fold and another parallel to and running before that one to below the ear. Also these folds have the scales raised and pointed and narrower than the dorsals, which are moderate, broad and smooth on the base, but on the distal part they have a keel ending in a sharp mucro; the scale-rows almost parallel to the dorsal crest; the lateral scales but little smaller than the dorsals (thirteen corresponding with ten); they are of the same shape as these, but the keels become fainter and the mucros shorter towards below. The ventral scales as large as the dorsals, smooth, broad, and obtusely pointed: the gulars like the ventrals, but under the neck the scales are larger, longer, and narrower. The tail is nearly twice as long as head and body, tapering and distinctly compressed. Caudal scales considerably larger than the dorsals (seven corresponding with ten), sharply keeled and pointed, forming rings; on the proximal part three rings with large scales alternate with one with considerably smaller scales, but on the distal part of the tail all the scales are alike. The scales on the limbs like those on the body: the scales on the upper surface of the tibia larger and more distinctly mucronated and more keeled than on the remaining parts of the extremities. The adpressed hind limb reaches the eye; fifth toe not extending as far as second: toes and fingers with sharply keeled lamellae inferiorly, somewhat fringed laterally.

The upper surfaces and the sides are dark brown: the cheeks, the lower temporal region, the lateral longitudinal fold, and small numerous oval spots on the sides whitish: a dark streak from the eye

to the angle of mouth. Broad dark crossbands on the upper surface of the distal part of tail. Under surfaces white, with the exception of the throat, belly, and under parts of the tail, which are beautifully pink.

Measurements: Total length 290 mm; length of the body 100 mm. From nose to ear 24 mm, from nose to eye 10 mm; length of fore limb 50 mm; length of hind limb 80 mm; length of 4th toe from the angle between 4th and 5th toe 34 mm.

Habitat: Peru, La Merced. 1000 m above the sea-level.

***Liolaemus signifer* Dum. Bibr.**

Bell, Zool. Beagle. Rept. p. 8, pl. 4, fig. 1. — Boulenger, Cat. Liz. II, p. 154. — Koslowsky, Revista del Museo de la Plata, Tom 8.

5 specimens from Guaqui, Peru. 140—207 mm in total length; 4 males and 1 female

In three specimens the ground-colour is grassgreen, in one (the female) light brown, and in the fifth one brown with a nice tint of greyish blue. In all there are two rows of dark spots regularly arranged on each side of the body and of that shape which is characteristic for the species; in some specimens, however, the spots are less distinct and more irregular than in other. The upper part of the head is in all uniform brown and the whole lower surface whitish with green longitudinal spots, especially on breast and chin. The scales are very small and numerous, varying from 78 to 90 around the body. Generally the scales of the sides are distinctly smaller than those of the back, but in two specimens this difference in the size of the scales is almost invisible, and I was very much in doubt whether these specimens should be reckoned to Cope's species *L. multiformis*, but being in other respects completely similar to the other specimens with distinctly unlike-sized scales, I could not distinguish them specifically. Later on I have seen Koslowsky, though with ?, refer *L. multiformis* Cope as a synonym to one of the numerous varieties he gives of *L. signifer* Dum. Bibr., and it seems to me very probable that the two forms are not to be maintained as distinct species, but the *L. multiformis* Cope being instead reckoned as a more large-scaled variety of the very much varying *L. signifer*. The difference between the forms, being stated on account of the number of the anal pores, also seems to have no value. In Boulenger's Catalogue these are mentioned to be five or six in *L. multiformis* but only four in *L. signifer*; in all my specimens, however, also in the typical *signifer*-specimens, they are six, possibly five in one, but never four.

Liolaemus lativittatus Werner.

Werner, Ergebnisse der Hamburger Magelhaensischen Sammelreise. Heft 7, Hamburg 1904, p. 8.

Three *Liolaemus*-specimens, male, female and a young one, from Yauli 4000 m and Arapa 4500 m, Peru, probably belong to this species. The type-specimen Werner's is a female, and his description and figure agree completely with the female in this collection, except that the whole lower surface of the latter is uniform bluish gray; nor there is any well marked frontal, these being, however, differences of no specific value. In the male the lateral band is narrower, the hind part of the belly and the lower surface of the thighs black, and besides there are black longitudinal spots on the bluish gray underparts. The male has 58, the female 54 scales round the middle of the body; all the scales pointed, ending in an acute angle but not mucronated as in the following species. In the female some of the temporals are feebly keeled, in the male they are all quite smooth. The young one is dark brown with very distinct lateral stripes; below dark bluish gray without dark marbles. The male has 4 anal pores.

Measurements of the male: Total length 91 mm (the tail regenerated); from nose to vent 46 mm, from nose to eye 4 mm, from nose to ear 11 mm, from nose to fore limbs 17 mm; length of fore limbs 16 mm; length of femur 7,5 mm; from knee to the extremity of the 4th toe 19 mm. The breadth of head 9 mm. The total length of the female is 132 mm, the length of the body 50 mm; the length of the young respectively 53 and 22,5 mm.

Liolaemus cyanogaster Dum. Bibr.

Boulenger, Cat. Liz. II, p. 145. — Bell, Zool. Beagl. Rept., p. 12, pl. 5, fig. 2. — Koslowsky, Revista del museo de la Plata, Tom. 8.

6 specimens from Guaqui, Peru; two males, one female, three young. I was very much in doubt whether they ought to be referred to this species or to the nearly allied *L. bibronii* Bell. They agree very well with the descriptions of both these species and also in general with Bell's figures of them. Yet, the dark lateral spots, which are described in *L. bibronii*, are very faint, instead there is a well marked light coloured lateral band, said to exist in *L. cyanogaster*; the small number of scales round the middle of the body (40—46) also seems to be a *cyanogaster*-character, but the scales of the head are

striated only in one of the specimens, as they are stated to be in *L. cyanogaster*, in all the others they are quite smooth as in *L. bibronii*. Thus, the differences between these species are very unimportant, and finding Koslowsky consider them as synonyms I cannot see but he has good reason to do so. In the young there are on each side two very distinct lateral bands with copper gloss, a broad one from above the eye to somewhat out on the tail, and another more narrow from beneath the eye above the tympanum to the groin. Anal pores 3—4. Length of the specimens: 49 + 66 mm (the tail a little mutilated), 52 + 58 mm, 50 + 62 mm, 34 + 36 mm (the tail mutilated), 29 + 51 mm, 34 + 24 mm (the tail mutilated).

***Mabuia comorensis* Peters.**

Peters, Mon. Ber. Berl. Ac. 1854, p. 619, and Reise nach Mosamb., III, p. 72, pl. 10, fig. 3. — Boul. Cat. Liz. III, p. 163.

One specimen from Mombassa, British East-Africa: Captain F. Seyd. Body and head 90 mm; the tail mutilated. It differs from Peters' and Boulenger's descriptions only somewhat in colour; the two rows of dark spots we find in Peters' figure are wanting and also the lateral band. Back and sides are olive-brown without any sharp border and merging in the light colour of the lower surface. There is however no doubt that it is a *Mabuia comorensis* Peters, the occurrence of which on the African continent thus is stated. In Catalogue of Lizards Boulenger marks with ? Mozambique as locality for this lizard, but living at Mombassa it probably exists also at other places of the East-African coast.

***Mabuia raddoni* Gray.**

Boulenger, Cat. Liz. III, p. 165.

6 specimens, Bibundi, Cameroons (J. Weiler and O. Rau).

A very large specimen, 310 mm in total length, is distinguished from the others in having on the scales of the back several fainter keels beside the three ordinary strong ones. The 4th upper labial is divided into two, causing that the number of labials before the supraocular becomes five, and in colour it also differs in the want of the dark broad lateral band and the narrow light stripe below it. All the upper parts are uniform dark brown without limit merging into the light under surfaces.

Chalcides sepoides Aud.

Boulenger, Cat. Liz. III, p. 407. — Andersson, The Zoology of Egypt.

One specimen from Egypt (L. Geisenheyner).

It differs in having very short limbs, the fore ones being shorter instead of longer, as Andersson states, than the distance between the tip of the snout and the eye; furthermore, the hind limbs are considerably shorter than the distance between eye and axil, thus smaller than hitherto stated. All the extremities have only four digits, of which on the right hand the outermost finger is very small and reduced and on the left hand the innermost also very short; there are on that hand only two fingers not reduced; the toes of the hind limbs are alike on both sides, the innermost being rather small and the others regularly increasing in length to the outermost, which is the longest. Andersson says that he has never seen any specimen from Egypt, having the fingers and toes reduced to such a degree, although such specimens are known from other countries. The whole limbs, however, are in this specimen more reduced than hitherto found at any place.

Length of body 105 mm; the tail is broken. Length of fore limbs 5,3 mm, length of hind limbs 14,5 mm; distance between the tip of the snout and the eye 5,6 mm; distance between the eye and the axil 16 mm.

Telmatobius peruvianus Wieg.

Wieg., Nova Acta Leopold. 1835, p. 262, pl. 22, f. 2. — Peters, Mon. Berl. Ac. 1873, p. 413, pl. 2, f. 3. — Boul., Cat. Batr. sal., p. 191.

6 specimens from Titicaca.

The ground-colour is plumbeous gray; some are uniform, but in some the ground-colour is mingled with small indistinct light spots; the dark longitudinal band and the two cross-bands, said to exist, do not appear in any specimen. In one specimen the whole upper surface is covered with very small yellowish horny points; in the other specimens there are such ones only somewhere on the body, but they are always to be found, at least to some extent. All the specimens are females.

Measurements of the largest specimen: From nose to vent 77 mm. Length of the nose 11 mm, length of the orbit 6,2 mm, from nose to angle of mouth 25,5 mm. Breadth of head at the angle of mouth 29 mm. Humerus 14 mm, from the elbow to the tip of third finger 35 mm, femur 36 mm, tibia 33 mm, tarsus with 4th toe 53 mm.

Paludicola borelli Per.

Five specimens from La Paz, Bolivia, and eleven from Guaqui, Peru.

The specimens are kindly determined by Dr. G. A. Boulenger. They agree completely with the specimens from Casabindo (Puna de Jujuy. Andes of Argentine), in *Arkiv för Zoologi*, Bd. 3, Nr. 12, 1906 described by myself as a new species, *Paludicola alpina*, which species, thus, is not to be maintained.

Bufo spinulosus Wieg.

Wieg., *Nova Acta Leopold.* XVII, t. 22, f. 3. — Bouleng., *Cat. Batr. Sal.* p. 302. — Werner, *Fauna Chilensis*, Heft 1, p. 277.

23 specimens from several localities in Peru and Bolivia, among which there is a beautiful variety from Arapa, Peru, 4500 m above the sea-level, that I have not seen described. All the five specimens from this latter locality are distinguished in having the warts very closely arranged and ending in obtuse horny tubercles instead of acute spines. The large black spots that generally appear in the typical form are wanting; a distinct light median dorsal stripe runs from the tip of the snout to the vent; the ground colour above brown with dark warts, sometimes small light spots on the sides of the dorsal stripe. The foot with 4th toe is shorter than in the typical form. As all specimens from this locality, the large as well as the small ones, are of the same appearance, and as I have not found one like these among all the specimens of this species I have seen, I think it possible that they may represent a constant colour-variety, which I will name *arapensis*. Of the three varieties Werner establishes in *Fauna chilensis* the variety *ornata* seems also to have a light dorsal band, but the figure Werner gives does not agree with my form.

Length of the variety *arapensis* 25—43 mm between nose and vent.

Berichtigungen.

Seite 35	Zeile 14	von oben:	anstatt	Antonia	lies	Antonio.
" 35	" 3	" unten:	"	Vauli	lies	Yauli.
" 222	" 3	" oben:	"	Josemitetal	lies	Yosemitetal.
" 222	" 5	" unten:	"	"	"	"
" 229	" 5	" oben:	"	Yanli	lies	Yauli.
" 229	" 11	" oben:	"	Gnaqui	lies	Guaqui.
" 230	" 5	" unten:	"	Josemite-Tal	lies	Yosemitetal.
" 233	" 3	" oben:	"	gnaquiensis	lies	guaquiensis.
" 233	" 4	" oben:	"	Gnaqui	lies	Guaqui.
" 234	" 10	" unten:	"	"	"	"
" 239	" 19	" oben:	"	Yanli	lies	Yauli.
" 244	" 8	" oben:	"	Josemite-Tal	lies	Yosemitetal.
" 256	" 4	" unten:	"	josemitensis	lies	yosemitensis.
" 256	" 3	" unten:	"	Josemitetal	lies	Yosemitetal.
" 258	" 4	" unten:	"	"	"	"

III.

Nachrichten aus der Meteorologischen Station
zu Wiesbaden.

Ergebnisse
der
meteorologischen Beobachtungen
der
Station II. Ordnung Wiesbaden
im Jahre 1907.

Von

Eduard Lampe,

Custos des Naturhistorischen Museums, Vorsteher der meteorologischen
Station Wiesbaden.

Jahres-Uebersicht.

<i>Luftdruck:</i>	Mittel	752,5 mm
	Maximum am 22. Januar	770,7 "
	Minimum " 14. Dezember	724,2 "
<i>Lufttemperatur:</i>	Mittel	9,4° C.
	Maximum am 5. August	29,9° "
	Minimum " 23. Januar	—13,1° "
	Grösstes Tagesmittel " 5. August	21,4° "
	Kleinstes " " 22. Januar	—9,8° "
	Zahl der Eistage	17
" " Frosttage	53	
" " Sommertage	18	
<i>Feuchtigkeit:</i>	mittlere absolute	7,3 mm
	" relative	78,6 %
<i>Bewölkung:</i>	mittlere	6,6
	Zahl der heiteren Tage	49
	" " trüben "	149
<i>Niederschläge:</i>	Jahressumme	622,9 mm
	Grösste Höhe eines Tages am 6. September	23,5 "
	Zahl der Tage mit Niederschl. mindestens 0,1 mm	172
	" " " " " " mehr als 0,2 mm	157
	" " " " " " mindestens 1,0 mm	115
	" " " " " " Schnee mindestens 0,1 mm	29
	" " " " " " Schneedecke	39
	" " " " " " Hagel	—
	" " " " " " Graupeln	2
	" " " " " " Tau	83
	" " " " " " Reif	17
	" " " " " " Nebel	12
	" " " " " " Gewitter	20
<i>Winde:</i>	Zahl der beobachteten Winde	
	N NE E SE S SW W NW	Windstille
	121 165 72 74 42 279 112 151	79
	Mittlere Windstärke	1,8
	Zahl der Sturmtage	5

Oestliche Länge von Greenwich = 8° 14'. Nördliche Breite = 50° 5'.

Monat	Luftdruck auf 0° C und Normalschwere reduziert					Lufttemperatur: C°							
	Mittel	Maximum	Datum	Minimum	Datum	7 a	2 p	9 p	Mittel	Mittl. Max.	Mittl. Min.	Absol. Max.	Datum
Januar . .	759.2	770.7	22.	737.0	30.	1.0	3.1	1.6	1.8	3.9	-0.3	8.3	18.
Februar . .	52.3	64.7	28.	29.3	20.	-0.4	1.9	0.4	0.6	2.8	-1.7	9.0	28.
März . . .	56.4	64.9	21.	43.9	14.	2.4	7.7	4.7	4.9	8.6	1.4	16.5	30.
April . . .	46.6	62.3	23.	34.7	4.	5.9	11.6	7.7	8.3	12.5	4.2	17.8	23.
Mai	50.2	57.2	8.	42.8	31.	12.1	18.2	13.5	14.3	19.1	9.1	27.9	12.
Juni	51.3	57.2	16. 17.	42.2	1.	14.2	19.3	15.2	16.0	20.8	11.3	27.4	28.
Juli	52.7	61.4	12.	45.0	30.	14.0	19.2	15.5	16.0	20.4	11.6	28.2	29.
August . .	53.4	59.4	22.	44.1	15.	14.5	21.7	16.2	17.1	22.6	12.3	29.9	5.
September.	55.6	63.4	18.	44.1	3.	11.5	19.0	13.8	14.5	20.3	10.2	25.2	8.
Oktober . .	48.3	57.6	12.	35.9	16.	9.5	14.3	10.9	11.4	14.8	8.7	19.1	1.
November	53.9	63.1	30.	41.6	26.	3.7	6.8	4.7	5.0	7.3	2.9	12.8	27.
Dezember .	49.8	65.5	17.	24.2	14.	2.4	4.2	2.9	3.1	4.9	1.2	10.6	9.
Jahres-Mittel .	752.5												
		770.7	22/I	724.2	14/XII	7.6	12.2	8.9	9.4	13.2	5.9		
												29.9	5/VIII

Monat	Zahl der Tage mit										
	Niederschlag			Schnee min- destens 0,1 mm	Schnee- decke	Hagel	Graup- eln	Reif	Tau	Glatt- eis	Nebel
	min- destens 0.1 mm	mehr als 0.2 mm	min- destens 1.0 mm	✕	☒	▲	△	┌	└	∞	≡
Januar . .	15	13	11	8	10	—	—	2	—	—	—
Februar . .	14	11	6	8	17	—	1	4	—	—	—
März	15	14	10	7	7	—	1	6	—	—	—
April	11	9	7	2	—	—	—	—	—	—	—
Mai	12	12	9	—	—	—	—	—	7	—	—
Juni	16	16	10	—	—	—	—	—	8	—	—
Juli	18	17	11	—	—	—	—	—	13	—	—
August . . .	14	12	8	—	—	—	—	—	17	—	—
September .	8	7	5	—	—	—	—	—	23	—	1
Oktober . .	18	16	12	—	—	—	—	—	12	—	3
November .	12	11	9	1	1	—	—	2	3	—	6
Dezember . .	19	19	17	3	4	—	—	3	—	—	2
Jahres-Summe .	172	157	115	29	39	—	2	17	83	—	12

Uebersicht von 1907.

Stunden in Ortszeit = M.-E.-Z. — 27 Minuten.

Absol. Min.	Datum	Absolute Feuchtigkeit mm				Relative Feuchtigkeit o/o				Bewölkung 0—10				Niederschlag mm		
		7a	2p	9p	Mittel	7a	2p	9p	Mittel	7a	2p	9p	Mittel	Summe	Max. in 24 Std.	Datum
-13.1	23.	4.5	4.7	4.6	4.6	87.6	79.8	84.6	84.0	8.1	7.4	7.5	7.7	42.6	10.6	29.
-8.0	11.	4.1	4.1	4.1	4.1	88.6	77.2	83.9	83.2	9.2	8.2	7.0	8.2	29.5	14.7	21.
-2.6	12.	4.7	5.1	5.2	5.0	85.6	66.6	79.7	77.3	7.0	6.2	4.9	6.0	61.9	11.2	21.
-0.7	21.	5.5	5.7	5.9	5.7	79.7	56.2	75.4	70.4	6.1	6.1	5.5	5.9	32.3	14.3	27.
3.1	19.	8.3	8.6	8.9	8.6	77.8	56.0	76.9	70.2	5.8	5.5	5.5	5.6	41.4	8.7	14.
6.7	17.	9.7	9.7	10.2	9.9	80.9	58.4	79.2	72.8	6.9	7.2	6.7	7.0	42.9	7.3	3.
7.8	21.	9.8	9.7	10.4	10.0	81.8	59.1	79.3	73.4	6.9	6.2	6.1	6.4	74.0	17.9	11.
7.2	25.	10.6	10.8	11.2	10.9	85.3	56.4	81.1	74.4	4.1	6.0	4.1	4.7	42.0	19.4	6.
4.7	23.	9.2	10.3	9.9	9.8	90.0	63.3	84.5	79.2	4.3	4.4	3.0	3.9	55.3	23.5	6.
5.4	18.	8.4	9.5	8.9	8.9	94.2	78.8	90.0	88.0	8.8	7.4	7.8	8.0	58.5	13.2	1.
-3.0	7.	5.4	5.9	5.6	5.6	89.0	79.1	86.9	85.0	8.0	7.5	6.9	7.5	60.3	17.2	14.
-4.4	31.	4.9	5.1	5.0	5.0	87.8	80.9	86.6	85.1	9.0	8.5	7.5	8.3	82.2	20.4	9.
-13.1	23/I	7.1	7.4	7.5	7.3	85.7	67.6	82.4	78.6	7.0	6.7	6.0	6.6	622.9		
														Jahres-summe	23.5	6/IX

Ge-witter	Wetter-leuchten	Zahl der						Windverteilung Zahl der Beobachtungen mit								Wind-Stärke	
		hei-teren	trübten	Sturm-	Eis-	Frost-	Sommer-	N	NE	E	SE	S	SW	W	NW		Wind-Stille
		T a g e															
—	—	3	18	—	4	11	—	14	9	8	—	—	40	8	14	—	2.3
1	—	—	17	1	9	16	—	15	13	3	12	1	19	7	10	4	2.1
—	—	5	11	3	—	8	—	11	8	13	5	6	15	13	16	6	2.0
—	—	3	8	—	—	1	—	17	20	10	1	4	10	11	12	5	1.8
4	—	7	8	—	—	—	4	7	8	5	16	6	24	8	13	6	1.9
6	—	1	10	—	—	—	2	7	1	1	5	6	34	14	10	12	1.9
1	—	4	12	—	—	—	2	14	3	1	—	6	22	8	21	8	1.8
5	—	9	6	1	—	—	9	6	1	1	1	1	30	25	15	13	1.6
2	—	13	4	—	—	—	1	15	24	5	9	1	14	4	10	8	1.5
1	—	—	16	—	—	—	—	4	14	8	9	4	36	4	4	10	1.2
—	—	4	18	—	—	8	—	5	33	10	12	4	9	5	7	5	1.7
—	—	—	21	—	4	9	—	6	31	7	4	3	26	5	9	2	1.8
20	—	49	149	5	17	53	18	121	165	72	74	42	279	112	151	79	1.8 Jahres-mittel

Tag	1.				2.			3.	
	Luftdruck (Barometerstand auf 0° und Normal- schwere reduziert) 700mm +				Temperatur-Extreme (abgelesen 9P) °C			Luft- °C	
	7 a	2 P	9 P	Tages- mittel	Maxi- mum	Mini- mum	Diffe- renz	7 a	2 P
1	42.1	46.3	46.3	44.9	4.4	-5.0	9.4	2.9	3.5
2	44.2	41.2	40.2	41.9	7.5	1.6	5.9	5.2	7.1
3	43.0	41.0	42.2	42.1	5.5	1.7	3.8	2.3	5.2
4	46.9	51.6	58.1	52.2	3.7	1.5	2.2	2.6	2.8
5	62.3	63.7	64.2	63.4	4.0	0.3	3.7	1.0	3.9
6	59.7	57.3	60.7	59.2	4.9	0.6	4.3	1.1	3.8
7	63.2	64.5	64.9	64.2	5.0	2.7	2.3	3.5	4.6
8	63.3	62.7	62.9	63.0	5.9	3.5	2.4	3.9	4.9
9	62.3	61.6	61.3	61.7	6.4	3.7	2.7	5.5	5.5
10	60.3	60.4	61.7	60.8	4.6	2.1	2.5	3.3	3.9
11	60.2	60.9	65.0	62.0	5.8	2.7	3.1	3.0	4.5
12	66.7	64.5	63.1	64.8	4.8	2.8	2.0	3.3	4.5
13	60.5	62.7	64.0	62.4	7.4	3.6	3.8	5.4	6.5
14	63.0	62.5	62.9	62.8	6.4	4.2	2.2	4.6	5.6
15	64.0	65.4	66.2	65.2	7.2	5.0	2.2	5.4	6.9
16	65.9	66.1	67.1	66.4	6.5	4.5	2.0	4.6	5.4
17	68.2	69.8	70.2	69.4	7.5	4.6	2.9	5.2	7.4
18	70.5	69.2	68.5	69.4	8.3	2.7	5.6	7.4	8.3
19	67.5	66.7	67.8	67.3	4.8	1.6	3.2	3.0	4.6
20	68.5	67.7	66.7	67.6	4.9	0.0	4.9	0.2	4.6
21	64.5	63.2	64.9	64.2	3.5	-2.1	5.6	2.5	3.2
22	66.0	67.3	70.7	68.0	-2.1	-10.9	8.8	-9.9	-7.3
23	70.0	68.2	69.1	69.1	-6.8	-13.1	6.3	-12.5	-7.0
24	68.6	68.1	66.7	67.8	-3.1	-9.9	6.8	-9.7	-4.1
25	64.3	61.2	58.6	61.4	-0.6	-7.9	7.3	-7.7	-0.9
26	53.3	55.8	59.1	56.1	1.5	-3.2	4.7	-2.3	1.2
27	60.5	60.6	59.7	60.3	0.5	-3.5	4.0	-3.5	-0.1
28	53.0	52.1	47.9	51.0	1.7	-3.1	4.8	-2.2	1.2
29	40.8	41.0	39.3	40.4	5.9	1.1	4.8	3.3	4.7
30	37.0	37.7	40.0	38.2	3.0	-0.4	3.4	-0.4	1.8
31	43.0	46.7	51.0	46.9	1.7	-1.3	3.0	-0.1	0.9
Monats- Mittel	58.8	59.0	59.7	59.2	3.9	-0.3	4.2	1.0	3.1

PENTADEN - ÜBERSICHT

Pentade	Luftdruck		Lufttemperatur		Bewölkung		Niederschlag
	Summe	Mittel	Summe	Mittel	Summe	Mittel	Summe
1.—5. Jan.	244.5	48.9	16.0	3.2	43.3	8.7	15.0
6.—10. "	308.9	61.8	21.7	4.3	47.6	9.5	3.3
11.—15. "	317.2	63.4	25.2	5.0	43.7	8.7	0.9
16.—20. "	340.1	68.0	23.2	4.6	42.4	8.5	—
21.—25. "	330.5	66.1	-28.5	-5.7	16.3	3.3	4.0
26.—30. "	246.0	49.2	0.0	0.0	37.3	7.5	16.4

4.

5.

temperatur		Absolute Feuchtigkeit mm				Relative Feuchtigkeit %				Tag
9 p	Tages- mittel	7 a	2 p	9 p	Tages- mittel	7 a	2 p	9 p	Tages- mittel	
1.8	2.5	4.7	5.2	5.1	5.0	82	88	96	88.7	1
4.9	5.5	6.1	5.9	5.6	5.9	92	78	86	85.3	2
3.7	3.7	4.9	5.0	5.1	5.0	89	75	85	83.0	3
2.7	2.7	4.9	4.8	4.3	4.7	89	86	77	84.0	4
0.8	1.6	4.2	3.8	4.6	4.2	85	62	94	80.3	5
4.2	3.3	4.9	5.6	5.6	5.4	98	93	90	93.7	6
4.9	4.5	5.2	5.5	5.6	5.4	88	87	86	87.0	7
5.9	5.2	5.5	6.0	6.1	5.9	90	94	88	90.7	8
4.3	4.9	5.8	6.1	5.8	5.9	86	91	93	90.0	9
4.0	3.8	4.7	5.1	5.3	5.0	82	84	87	84.3	10
4.1	3.9	5.4	5.8	4.9	5.4	95	92	80	89.0	11
3.8	3.8	5.1	5.4	4.9	5.1	88	86	82	85.3	12
5.4	5.7	6.2	5.7	5.5	5.8	92	80	82	84.7	13
5.9	5.5	5.2	6.1	6.1	5.8	82	89	88	86.3	14
6.5	6.3	5.5	5.9	5.8	5.7	82	80	81	81.0	15
5.0	5.0	5.8	5.4	5.6	5.6	92	80	86	86.0	16
5.7	6.0	5.7	6.3	6.2	6.1	86	82	91	86.3	17
2.7	5.3	6.2	6.3	5.0	5.8	80	77	89	82.0	18
4.4	4.1	4.7	4.8	4.9	4.8	83	76	79	79.3	19
3.1	2.8	4.1	4.4	4.5	4.3	89	70	79	79.3	20
-2.1	0.4	5.0	5.1	3.4	4.5	91	89	87	89.0	21
-10.9	-9.8	1.7	1.7	1.4	1.6	89	67	72	73.0	22
-9.2	-9.5	1.4	1.8	1.6	1.6	85	68	72	75.0	23
-6.1	-6.5	1.7	2.3	2.1	2.0	81	68	74	74.3	24
-1.9	-3.1	2.4	3.1	3.4	3.0	95	73	86	84.7	25
-2.6	-1.6	3.4	3.6	3.1	3.4	87	72	83	80.7	26
-2.6	-2.2	3.0	3.6	3.0	3.2	87	79	81	82.3	27
1.3	0.4	3.6	4.0	4.8	4.1	94	80	94	89.3	28
1.7	2.8	4.9	4.2	4.3	4.5	85	65	84	78.0	29
0.6	0.6	3.9	4.4	4.4	4.2	87	84	92	87.7	30
-1.3	-0.4	4.3	4.0	3.3	3.9	94	80	80	84.7	31
1.6	1.8	4.5	4.7	4.6	4.6	87.6	79.8	84.6	84.0	

	Maximum	am	Minimum	am	Differenz
Luftdruck	770.7	22.	737.0	30.	33.7
Lufttemperatur	8.3	18.	-13.1	23.	21.4
Absolute Feuchtigkeit	6.3	17. 18.	1.4	22. 23.	4.9
Relative Feuchtigkeit	98	6.	62	5.	36
Grösste tägliche Niederschlagshöhe	10.6 am 29.				
Zahl der heiteren Tage (unter 2,0 im Mittel)					3
" " trüben Tage (über 8,0 im Mittel)					18
" " Sturmtage (Stärke 8 oder mehr)					—
" " Eistage (Maximum unter 0°)					4
" " Frosttage (Minimum unter 0°)					11
" " Sommertage (Maximum 25,0° oder mehr)					—

6.

7.

Tag	Bewölkung				Wind		
	ganz wolkenfrei = 0		ganz bewölkt = 10		Richtung und Stärke		
	Windstille = 0		Orkan = 12			7 a	2p
	7 a	2p	9 p	Tages- mittel			
1	10	9	10	9.7	SW 3	SW 2	SW 1
2	10	10	10	10.0	SW 3	SW 3	SW 4
3	10	7	10	9.0	W 1	SW 4	SW 2
4	10	5	7	7.3	SW 2	NW 3	N 2
5	8	4	10	7.3	SW 2	W 3	SW 2
6	10	10	8	9.3	SW 1	SW 2	NW 2
7	8	10	10	9.3	SW 2	SW 2	SW 3
8	10	10	10	10.0	SW 3	W 2	N 2
9	10	10	7	9.0	NW 1	NW 1	N 1
10	10	10	10	10.0	W 2	W 2	SW 3
11	10	10	0	6.7	SW 2	SW 1	N 3
12	10	10	10	10.0	SW 2	SW 3	SW 3
13	10	6	7	7.7	SW 3	W 3	W 3
14	8	10	10	9.3	SW 2	SW 3	SW 3
15	10	10	10	10.0	SW 3	SW 3	SW 1
16	10	10	10	10.0	SW 1	NW 3	SW 2
17	10	10	6	8.7	N 1	NW 2	NW 2
18	10	10	7	9.0	N 2	N 3	N 3
19	10	6	10	8.7	N 1	N 3	NE 2
20	7	5	6	6.0	NE 1	E 3	NE 1
21	10	10	10	10.0	NW 2	NW 2	NE 4
22	2	0	0	0.7	NE 3	NE 5	NE 5
23	0	0	0	0.0	NE 3	E 4	E 4
24	0	1	0	0.3	NE 3	E 3	E 1
25	2	6	8	5.3	E 1	E 2	E 1
26	8	6	6	6.7	N 1	N 3	NW 2
27	4	4	7	5.0	NW 3	NW 3	SW 3
28	10	10	10	10.0	SW 2	SW 3	SW 2
29	10	6	6	7.3	W 2	NW 4	SW 3
30	8	7	10	8.3	SW 1	SW 2	SW 1
31	7	7	6	6.7	N 2	N 2	NW 1
	8.1	7.4	7.5	7.7	2.0	2.7	2.3

Mittel 2.3

Zahl der Tage mit:	
Niederschlag mindestens 1,0 mm . . . (● ✕ ▲ △)	11
Niederschlag mehr als 0,2 mm . . . " " " "	13
Niederschlag mindestens 0,1 mm . . . " " " "	15
Schnee mindestens 0,1 mm (✕)	8
Hagel (▲)	—
Graupeln (△)	—
Tau (P)	—
Reif (I)	2
Glatteis (S)	—
Nebel (≡)	—
Gewitter (nah R, fern T)	—
Wetterleuchten (<)	—

Niederschlag

Höhe der Schneedecke in cm 7^a

Bemerkungen

Tag

Form und Zeit

Höhe 7^a mm

3.0*	✕ + ● n, ● tr. a. ● ⁰ v. 4 ³ / ₄ p—III—n	14		1
5.9	● n, ● tr. einz. a, ● ⁰ oft p	3		2
3.7	● n, ● ⁰ ztw. p	0		3
1.8	● n, ● + ✕ ⁰ ztw. a	—		4
0.6*	✕ fl. a, ✕ + ● ¹ p—III—n	—		5
1.7*	● + ✕ n, ● ⁰ oft a—II, ● ⁰ p	—		6
1.6	● tr. einz. a + p	—		7
0.0	—	—		8
—	—	—		9
—	—	—		10
0.8	● n, ● tr. a, ● ⁰ ztw. p	—		11
0.1	● tr. einz. a + p	—		12
0.0	● tr. einz. a	—		13
0.0	—	—		14
—	—	—		15
—	—	—		16
—	—	—		17
—	—	—		18
—	—	—		19
—	—	—		20
0.1	● n, ● ⁰ + ✕ ⁰ oft a + p, ✕ ⁰ III	—		21
3.9*	—	0		22
—	—	0		23
—	—	0		24
—	—	0		25
—	✕ fl. einz. a	—		26
0.0	—	—		27
2.4*	✕ n, ✕ ⁰ I + ztw. a, ✕ ⁰ p	2	} zw. 12—2 oft Windstärke 6	28
10.6*	● n, ✕ + ● oft a, ✕ ¹ 2 ¹ / ₂ —3 p, ● ⁰ ztw. p, ✕ ⁰ abends [—III—n	—		29
3.4*	✕ ⁰ oft a + p—n	0		30
3.0*	✕ n, ✕ ⁰ oft a + p	3		31
42.6	Monatssumme.	22		

Wind-Verteilung.				
	7a	2p	9p	Summe
N	5	4	5	14
NE	4	1	4	9
E	1	4	3	8
SE	—	—	—	—
S	—	—	—	—
SW	15	11	14	40
W	3	4	1	8
NW	3	7	4	14
Still	—	—	—	—

Tag	Luftdruck (Barometerstand auf 0° und Normal- schwere reducirt) 700 mm +				Temperatur-Extreme (abgelesen 9p) °C			Luft- °C	
					Maxi- mum	Mini- mum	Diffe- renz	7a	2p
	7a	2p	9p	Tages- mittel					
1	54.0	56.1	60.3	56.8	-0.7	-5.7	5.0	-3.1	-2.5
2	62.8	62.2	61.5	62.2	-1.4	-6.8	5.4	-4.9	-1.8
3	58.7	57.7	56.6	57.7	-0.3	-5.9	5.6	-3.2	-0.7
4	55.5	56.2	57.5	56.4	-0.5	-2.1	1.6	-1.8	-1.4
5	59.6	59.6	59.3	59.5	1.5	-5.7	7.2	-3.3	1.3
6	55.7	52.7	52.3	53.6	0.0	-4.3	4.3	-2.2	-0.2
7	52.8	53.1	53.9	53.3	-0.1	-6.5	6.4	-5.9	-0.2
8	53.3	53.3	53.4	53.3	-0.7	-2.7	2.0	-2.1	-1.1
9	53.1	52.8	52.9	52.9	-1.3	-3.1	1.8	-2.5	-2.0
10	51.9	51.8	51.3	51.7	-2.6	-6.8	4.2	-4.2	-2.9
11	48.8	48.0	49.2	48.7	-3.8	-8.0	4.2	-6.1	-4.2
12	47.8	43.3	39.2	43.4	1.0	-5.6	6.6	-4.7	-0.3
13	36.9	38.6	42.9	39.5	2.9	0.2	2.7	1.3	2.7
14	48.1	51.1	55.4	51.5	3.5	0.9	2.6	1.2	2.9
15	57.1	56.4	55.7	56.4	3.4	0.7	2.7	1.0	3.2
16	53.0	52.1	54.0	53.0	4.0	1.0	3.0	1.3	2.7
17	54.6	51.0	50.7	52.1	7.8	1.2	6.6	1.7	4.0
18	55.7	54.4	52.9	54.3	7.7	1.6	6.1	2.2	7.7
19	50.4	49.8	44.9	48.4	8.3	4.3	4.0	5.3	8.1
20	31.4	29.3	30.8	30.5	8.6	1.3	7.3	8.0	2.4
21	31.5	36.3	38.8	35.5	4.0	0.7	3.3	1.9	3.9
22	42.3	43.2	46.2	43.9	3.2	-0.6	3.8	0.5	0.4
23	47.3	48.5	51.7	49.2	2.7	-3.1	5.8	-3.0	2.2
24	53.7	54.6	54.5	54.3	3.3	-1.4	4.7	-1.1	2.7
25	52.7	56.0	60.1	56.3	6.2	0.4	5.8	2.1	5.8
26	61.8	61.6	61.4	61.6	5.6	-0.4	6.0	0.8	4.7
27	62.3	63.2	64.3	63.3	7.2	3.5	3.7	4.0	7.1
28	63.4	63.8	64.7	64.0	9.0	5.0	4.0	5.6	8.1
Monats- Mittel	52.0	52.0	52.7	52.3	2.8	-1.7	4.5	-0.4	1.9

PENTADEN-ÜBERSICHT

Pentade	Luftdruck		Lufttemperatur		Bewölkung		Niederschlag
	Summe	Mittel	Summe	Mittel	Summe	Mittel	Summe
31. Jan. - 4. Febr.	280.0	56.0	-11.4	-2.3	37.7	7.5	3.9
5. - 9. "	272.6	54.5	-10.4	-2.1	39.0	7.8	0.6
10. - 14. "	234.8	47.0	-7.9	-1.6	48.0	9.6	1.8
15. - 19. "	264.2	52.8	21.3	4.3	44.7	8.9	3.9
20. - 24. "	213.4	42.7	6.4	1.3	34.9	7.0	22.0
25. Febr. - 1. März	308.9	61.8	22.2	4.4	37.3	7.5	0.3

temperatur		Absolute Feuchtigkeit mm				Relative Feuchtigkeit %				Tag
9p	Tages- mittel	7a	2p	9p	Tages- mittel	7a	2p	9p	Tages- mittel	
-5.7	-4.2	3.1	2.5	2.3	2.6	85	66	77	76.0	1
-4.1	-3.7	2.5	2.6	2.6	2.6	81	64	77	74.0	2
-1.0	-1.5	3.0	3.0	3.1	3.0	82	70	73	75.0	3
-1.6	-1.6	3.4	3.6	3.7	3.6	86	86	90	87.3	4
-0.7	-0.8	3.2	3.5	3.3	3.3	89	68	75	77.3	5
-3.7	-2.4	3.1	2.8	2.7	2.9	79	63	78	73.3	6
-2.7	-2.9	2.5	3.3	2.9	2.9	87	74	79	80.0	7
-1.6	-1.6	3.3	3.2	3.4	3.3	83	74	84	80.3	8
-3.1	-2.7	3.2	3.2	3.1	3.2	85	82	85	84.0	9
-6.8	-5.2	2.9	2.8	2.2	2.6	89	76	84	83.0	10
-5.6	-5.4	2.8	3.0	2.8	2.9	98	91	96	95.0	11
0.6	-1.0	3.1	3.6	3.9	3.5	95	79	82	85.3	12
2.0	2.0	4.2	4.0	4.9	4.4	83	87	93	87.7	13
1.3	1.7	4.8	4.9	4.4	4.7	96	86	87	89.7	14
1.8	2.0	4.5	4.9	4.8	4.7	90	85	91	88.7	15
3.6	2.8	4.8	5.3	5.4	5.2	96	94	92	94.0	16
6.3	4.6	4.7	5.6	5.8	5.4	91	92	81	88.0	17
5.2	5.1	5.2	5.8	6.1	5.7	96	73	92	87.0	18
6.9	6.8	5.9	6.7	6.8	6.5	89	83	91	87.7	19
3.0	4.1	7.0	5.1	4.2	5.4	88	93	74	85.0	20
0.7	1.8	4.8	4.0	4.0	4.3	91	65	83	79.7	21
-0.6	-0.1	4.3	4.1	3.8	4.1	90	87	86	87.7	22
-0.4	-0.4	3.3	3.6	3.5	3.5	91	66	79	78.7	23
1.3	1.0	3.8	3.7	3.7	3.7	90	67	73	76.7	24
1.1	2.5	4.9	4.8	4.9	4.9	91	70	90	83.7	25
3.9	3.3	4.3	4.7	5.4	4.8	89	73	88	83.3	26
5.0	5.3	5.2	5.5	5.7	5.5	85	73	87	81.7	27
5.6	6.2	5.9	6.0	5.5	5.8	86	74	82	80.7	28
0.4	0.6	4.1	4.1	4.1	4.1	88.6	77.2	83.9	83.2	

	Maximum	am	Minimum	am	Differenz
Luftdruck	764.7	28.	729.3	20.	35.4
Lufttemperatur	9.0	28.	-8.0	11.	17.0
Absolute Feuchtigkeit	7.0	20.	2.2	10.	4.8
Relative Feuchtigkeit	98	11.	63	6.	35
Grösste tägliche Niederschlagshöhe	14.7 am 21.				
Zahl der heiteren Tage (unter 2.0 im Mittel)	—				
„ „ trüben Tage (über 8.0 im Mittel)	17				
„ „ Sturmtage (Stärke 8 oder mehr)	1				
„ „ Eistage (Maximum unter 0°)	9				
„ „ Frosttage (Minimum unter 0°)	16				
„ „ Sommertage (Maximum 25.00 oder mehr)	—				

6.

7.

Tag	Bewölkung				Wind		
	ganz wolkenfrei = 0		ganz bewölkt = 10		Richtung und Stärke		
	7a	2p	9p	Tages- mittel	Windstille = 0	Orkan = 12	
1	9	7	0	5.3	N 1	N 3	NE 4
2	7	4	6	5.7	N 2	NE 3	N 1
3	10	10	10	10.0	N 2	NE 2	NE 2
4	10	10	10	10.0	NE 1	NE 2	NE 1
5	10	7	6	7.7	NE 1	N 3	NE 3
6	10	2	0	4.0	N 2	N 4	NE 3
7	7	7	8	7.3	N 1	NE 3	NE 2
8	10	10	10	10.0	NE 2	E 3	E 3
9	10	10	10	10.0	SE 2	S 3	SE 3
10	10	10	4	8.0	SE 2	SE 2	SE 2
11	10	10	10	10.0	SE 1	SE 1	SE 2
12	10	10	10	10.0	SE 1	SE 2	SE 1
13	10	10	10	10.0	SE 1	E 1	0
14	10	10	10	10.0	0	NW 2	N 2
15	10	10	10	10.0	NW 2	NW 2	N 1
16	10	10	6	8.7	SW 2	W 3	SW 2
17	10	10	2	7.3	SW 2	SW 4	NW 4
18	8	8	10	8.7	SW 1	SW 3	W 2
19	10	10	10	10.0	SW 3	SW 3	SW 2
20	10	10	10	10.0	SW 4	SW 2	SW 4
21	10	8	7	8.3	W 4	W 4	SW 3
22	10	6	0	5.3	W 3	NW 3	NW 2
23	4	4	2	3.3	SW 2	SW 3	SW 2
24	6	8	10	8.0	SW 1	NW 3	W 2
25	10	3	0	4.3	SW 1	NW 2	N 1
26	10	10	10	10.0	N 1	W 1	SW 1
27	10	10	10	10.0	NW 1	NW 1	0
28	8	7	4	6.3	N 3	N 2	0
	9.2	8.2	7.0	8.2	1.8	2.5	2.0
						Mittel 2.1	

Zahl der Tage mit:

Niederschlag mindestens 1,0 mm . . . (● × ▲ △)	6
Niederschlag mehr als 0,2 mm . . . " " "	11
Niederschlag mindestens 0,1 mm . . . " " "	14
Schnee mindestens 0,1 mm . . . " " "	8
Hagel (×)	—
Graupeln (▲)	—
Tau (△)	1
Reif (□)	—
Glatteis (⊥)	4
Nebel (≡)	—
Gewitter (☉)	—
Wetterleuchten (☽)	1
	(nah ☽, fern ☽)
	(☽)

Niederschlag

Höhe 7 ^a mm	Form und Zeit	Höhe der ehnee- decke in cm 7 ^a	Bemer- kungen	Tar
0.9*	* fl. einz. a	3		1
0.0	—	3		2
—	—	2		3
—	* ⁰ ztw. a + p—10 ¹ / ₂ p	2		4
0.6*	—	3		5
—	—	2	┌	6
—	—	2		7
—	—	2		8
—	—	2		9
—	—	2		10
—	—	2	┌	11
0.2*	* n	2		12
1.4*	* n, fein Sprüh ● a, fein ● p	3		13
0.2	—	—		14
—	—	—		15
0.1	● ⁰ n, ● ⁰ I ¹ / ₄ —II + p	—		16
0.8	● n, ● ⁰ oft a—II + ● ⁰ oft p	—		17
2.7	● ⁰ p	—		18
0.3	● n	—		19
3.8	f ● n, ● ⁰ I—10 a, ● + * ¹ / ₂ v. 10—11 ¹ / ₁ a, inzw. au h └ △ ¹ v. 10 ¹⁸ —10 ³⁵ a, * ⁰ ztw. p	—	└ ² 10 ¹² —10 ³⁸ a, — ¹¹ a	20
14.7*	* + ● n, * ⁰ I + ztw. a, * fl oft p, * ⁰ 8 ¹ / ₂ p—n	1	zw. 9—12 a	21
1.7*	* n, * ¹ I + ztw. a, * gest. ² 1 ³² —1 ⁵⁵ p	3	Windstärke 6	22
1.8*	—	2		23
—	* ⁰ a oft—II p, * fl. einz. p	1	┌ ²	24
0.3*	● n	—		25
—	—	—	┌ ⁰	26
—	—	—		27
—	—	—		28
29.5	Monatssumme.	37		

	7 ^a	2p	9p	Summe
N	7	4	4	15
NE	3	4	6	13
E	—	2	1	3
SE	5	3	4	12
S	—	1	—	1
SW	8	5	6	19
W	2	3	2	7
NW	2	6	2	10
Still	1	—	3	4

1.

2.

3.

Tag	Luftdruck (Barometerstand auf 0° und Normal- schwere reduziert) 700 mm +				Temperatur-Extreme (abgelesen 9P) °C			Luft- °C	
	7 a	2 p	9 p	Tages- mittel	Maxi- mum	Mini- mum	Diffe- renz	7 a	2 p
1	63.8	63.5	63.7	63.7	6.9	1.8	5.1	3.5	6.9
2	61.9	60.4	59.6	60.6	6.1	-0.1	6.2	0.0	5.2
3	59.6	60.2	60.4	60.1	6.1	0.1	6.0	0.4	4.9
4	60.8	60.2	60.9	60.6	7.1	0.8	6.3	1.5	6.4
5	60.5	57.7	57.4	58.5	6.8	0.0	6.8	0.2	6.2
6	55.4	54.7	57.8	56.0	6.0	-0.9	6.9	1.2	6.0
7	61.2	60.5	58.3	60.0	7.6	0.9	6.7	1.1	6.8
8	53.6	52.3	50.9	52.3	5.7	0.1	5.6	1.2	5.1
9	52.7	56.0	58.1	55.6	5.0	0.3	4.7	1.3	2.5
10	51.5	47.2	45.3	48.0	4.8	-0.3	5.1	-0.3	0.8
11	49.0	55.1	59.6	54.6	3.7	-1.4	5.1	-0.1	2.7
12	60.4	60.1	60.6	60.4	3.7	-2.6	6.3	-1.9	1.9
13	57.1	53.3	51.2	53.9	3.1	-1.4	4.5	-0.1	1.1
14	43.9	46.6	50.9	47.1	4.4	0.7	3.7	1.7	2.7
15	56.2	56.4	54.7	55.8	5.6	1.0	4.6	1.3	4.1
16	53.4	53.0	52.1	52.8	10.4	2.7	7.7	4.0	10.0
17	46.9	45.3	49.4	47.2	10.2	2.4	7.8	3.1	9.0
18	49.9	46.7	46.6	47.7	10.7	2.3	8.4	3.0	8.9
19	50.0	53.2	54.4	52.5	10.8	5.9	4.9	6.6	10.2
20	51.1	53.2	55.7	53.3	9.9	3.5	6.4	7.2	7.2
21	60.7	64.2	64.9	63.3	7.1	2.4	4.7	3.5	6.2
22	62.6	57.8	57.3	59.2	13.4	-1.2	14.6	-0.4	12.4
23	56.6	56.2	57.0	56.6	6.6	3.0	3.6	3.7	6.3
24	60.1	61.8	63.4	61.8	6.3	0.0	6.3	1.0	6.3
25	63.1	61.4	61.3	61.9	9.6	-2.2	11.8	-1.3	9.2
26	61.7	62.2	63.5	62.5	12.8	4.7	8.1	6.7	12.4
27	64.4	63.3	62.3	63.3	13.3	1.8	11.5	3.2	12.9
28	61.8	59.0	58.1	59.6	15.9	6.3	9.6	7.7	15.3
29	57.9	55.4	54.3	55.9	16.2	4.9	11.3	5.2	15.6
30	53.3	51.7	52.2	52.4	16.5	3.9	12.6	4.6	16.4
31	52.5	50.9	50.7	51.4	15.9	4.1	11.8	5.2	15.7
Monats- Mittel	56.6	56.1	56.5	56.4	8.6	1.4	7.2	2.4	7.7

PENTADEN - ÜBERSICHT

Pentade	Luftdruck		Lufttemperatur		Bewölkung		Niederschlag
	Summe	Mittel	Summe	Mittel	Summe	Mittel	Summe
2.— 6. März	295.8	59.2	14.8	3.0	22.0	4.4	—
7.—11. "	270.5	54.1	9.7	1.9	31.3	6.3	17.2
12.—16. "	270.0	54.0	14.0	2.8	45.7	9.1	23.4
17.—21. "	264.0	52.8	31.7	6.3	39.7	7.9	20.1
22.—26. "	302.0	60.4	27.1	5.4	30.9	6.2	1.2
27.—31. "	282.6	56.5	48.4	9.7	10.3	2.1	—

4.

5.

temperatur		Absolute Feuchtigkeit mm				Relative Feuchtigkeit %				Tag
9 p	Tages- mittel	7 a	2 p	9 p	Tages- mittel	7 a	2 p	9 p	Tages- mittel	
4.6	4.9	5.0	5.0	5.5	5.2	85	76	87	82.7	1
1.4	2.0	4.3	5.4	4.7	4.8	94	81	93	89.3	2
3.4	3.0	4.4	4.6	4.4	4.5	92	70	75	79.0	3
3.5	3.7	3.9	3.8	4.0	3.9	76	51	69	65.3	4
1.2	2.2	3.6	4.3	4.1	4.0	78	60	82	73.3	5
4.2	3.9	4.4	5.2	5.4	5.0	89	75	87	83.7	6
1.1	2.5	4.7	4.8	4.5	4.7	94	66	90	83.3	7
4.7	3.9	4.7	5.6	4.9	5.1	94	86	76	85.3	8
0.8	1.4	3.9	4.4	3.9	4.1	75	79	80	78.0	9
2.7	1.5	4.3	4.7	5.4	4.8	96	96	96	96.0	10
-0.5	0.4	3.4	4.1	3.7	3.7	76	74	83	77.7	11
0.8	0.4	3.5	4.0	4.1	3.9	88	77	85	83.3	12
2.5	1.5	4.0	4.8	4.7	4.5	87	96	84	89.0	13
2.5	2.4	4.9	4.4	4.7	4.7	94	79	84	85.7	14
2.7	2.7	4.2	5.0	5.4	4.9	83	82	96	87.0	15
7.0	7.0	5.9	6.6	6.7	6.4	97	72	89	86.0	16
6.7	6.4	5.3	7.2	5.5	6.0	93	84	76	84.3	17
10.3	8.1	5.4	7.4	7.7	6.8	95	87	82	88.0	18
7.5	8.0	5.6	3.5	4.9	4.7	77	38	64	59.7	19
4.0	5.6	5.9	5.3	5.2	5.5	77	70	85	77.3	20
2.4	3.6	4.4	4.2	4.3	4.3	75	59	79	71.0	21
5.7	5.8	4.1	4.8	5.2	4.7	92	45	76	71.0	22
3.8	4.4	4.3	4.3	4.5	4.4	72	60	75	69.0	23
1.2	2.4	3.8	3.8	3.9	3.8	77	53	78	69.3	24
7.4	5.6	3.7	4.2	5.1	4.3	88	48	67	67.7	25
8.3	8.9	5.8	5.4	5.2	5.5	80	50	63	64.3	26
7.2	7.6	4.9	5.0	6.1	5.3	85	45	80	70.0	27
10.0	10.8	6.1	7.3	6.8	6.7	77	57	74	69.3	28
9.7	10.0	6.1	8.3	6.6	7.0	92	62	74	76.0	29
9.4	10.0	5.7	5.5	6.4	5.9	90	40	72	67.3	30
9.6	10.0	5.8	6.2	6.4	6.1	87	47	71	68.3	31
4.7	4.9	4.7	5.1	5.2	5.0	85.6	66.6	79.7	77.3	

	Maximum	am	Minimum	am	Differenz
Luftdruck	764.9	21.	743.9	14.	21.0
Lufttemperatur	16.5	30.	-2.6	12.	19.1
Absolute Feuchtigkeit	8.3	29.	3.4	11.	4.9
Relative Feuchtigkeit	97	16.	38	19.	59
Grösste tägliche Niederschlagshöhe	11.2 am 21.				
Zahl der heiteren Tage (unter 2,0 im Mittel)					5
" " trüben Tage (über 8,0 im Mittel)					11
" " Sturmtage (Stärke 8 oder mehr)					3
" " Eistage (Maximum unter 0°)					—
" " Frosttage (Minimum unter 0°)					8
" " Sommertage (Maximum 25,0° oder mehr)					—

6.

7.

Tag	Bewölkung				Wind		
	ganz wolkenfrei = 0		ganz bewölkt = 10		Richtung und Stärke		
	7 a	2 p	9 p	Tages- mittel	7 a	2 p	9 p
1	7	7	6	6.7	NW 1	... 0	NW 2
2	6	4	4	4.7	N 1	S 3	S 2
3	4	7	2	4.3	S 1	E 2	NE 1
4	7	0	0	2.3	NE 2	NE 4	NE 1
5	2	0	0	0.7	NE 2	SE 2	SE 1
6	10	10	10	10.0	SE 1	SW 2	NW 1
7	4	4	2	3.3	N 1	S 2	SW 1
8	10	10	6	8.7	SW 1	SW 4	NW 3
9	7	9	0	5.3	NW 3	W 3	W 1
10	10	10	10	10.0	... 0	W 2	NW 1
11	10	0	2	4.0	N 3	N 4	N 2
12	7	7	10	8.9	W 2	NW 2	N 2
13	10	10	8	9.3	W 1	SW 2	SW 3
14	10	8	8	8.7	SW 2	NW 3	NW 4
15	9	10	10	9.7	W 2	SW 2	S 2
16	10	10	10	10.0	S 1	SW 3	SW 1
17	10	10	8	9.3	SW 1	SW 3	... 0
18	10	10	10	10.0	NW 1	SW 2	W 2
19	7	10	6	7.7	SW 2	W 4	W 5
20	10	8	8	8.7	SW 4	W 5	NW 3
21	6	4	2	4.0	NW 4	NW 3	W 2
22	7	8	7	7.3	W 1	W 5	NW 3
23	8	9	8	8.3	N 3	NW 4	NW 2
24	0	9	1	3.3	N 2	E 1	E 1
25	2	6	10	6.0	E 2	N 2	... 0
26	10	6	2	6.0	N 1	E 3	NE 2
27	4	0	0	1.3	N 1	E 2	NE 1
28	10	3	0	4.3	... 0	SE 2	... 0
29	3	2	0	1.7	NE 1	SE 3	E 2
30	2	2	0	1.3	E 1	E 3	E 1
31	4	0	1	1.7	E 1	E 2	E 2
	7.0	6.2	4.9	6.0	1.6	2.7	1.7
						Mittel 2.0	

Zahl der Tage mit:	
Niederschlag mindestens 1,0 mm . . . (☉ ✕ ▲ △)	10
Niederschlag mehr als 0,2 mm . . . " " " "	14
Niederschlag mindestens 0,1 mm . . . " " " "	15
Schnee mindestens 0,1 mm (✕)	7
Hagel (▲)	—
Graupeln (△)	1
Tau (⊥)	—
Reif (⊥)	6
Glatteis (⊃)	—
Nebel (≡)	—
Gewitter (nah ☒, fern ☒)	—
Wetterleuchten (<)	—

Niederschlag		Höhe der Schneedecke in cm 7 ^a	Bemerkungen	Tag
Höhe 7 ^a mm	Form und Zeit			
—	—	—	— ⁰	1
—	—	—	— ¹ fr.	2
—	—	—	— ⁰	3
—	—	—	—	4
—	—	—	—	5
—	☉ tr. ztw. a—III	—	—	6
0.6	—	—	—	7
2.8*	* n, * ☉ ⁰ 7 ¹ / ₄ —8 a, ☉ ⁰ ztw. a—II—7 p, ☉ ⁰ 10 ¹ / ₄ p—n	2	—	8
3.6*	* n, * gest. ¹ + ☉ ⁰ a—8 p oft	1	—	9
4.3*	* n, * ¹ I fast ohne Unterbr.—12 a	3	—	10
5.9*	☉ n	2	—	11
—	* fl. einz. a + oft p	1	—	12
0.1*	* ☉ ⁰ · ¹ 12 ¹ / ₂ p—II—3 ¹ / ₂ p, * fl. einz. p	—	—	13
9.0*	* ☉ n, * ☉ ⁰ · ¹ 1—8 ¹ / ₂ a, * ¹ 10 ⁴⁵ —11 a, * gest. ² 11 ⁵⁵ a—12 ¹⁰ p	0	ztw. p Windst. 6	14
8.7*	* n, ☉ ⁰ a + ☉ ⁰ · ¹ p—III [+ 12 ¹ / ₂ —1 p, * ☉ ¹ oft—5 ¹ / ₂ p	0	—	15
5.6	☉ n, ☉ ⁰ ztw. a	—	—	16
0.3	f. ☉ oft a + p	—	—	17
1.7	☉ n, ☉ ⁰ oft a + p—III—n	—	—	18
6.9	☉ n, ☉ tr. einz. a	—	— v. 9 ³ / ₄ p an	19
0.0	☉ ⁰ + △ oft a + ztw. p, ☉ ⁰ v. 7 ¹ / ₂ p—III—n	—	— n + a + p	20
11.2	—	—	— n	21
—	☉ ⁰ ztw. p—8 p	—	— ²	22
0.3	☉ ⁰ nach 11 a oft, ☉ ⁰ ztw. p	—	—	23
0.9	* n	—	—	24
—	—	—	—	25
—	—	—	—	26
—	—	—	—	27
—	—	—	—	28
—	—	—	—	29
—	—	—	—	30
—	—	—	—	31
61.9	Monatssumme.	9	—	

Wind-Verteilung.				
	7 ^a	2p	9p	Summe
N	7	2	2	11
NE	3	1	4	8
E	3	6	4	13
SE	1	3	1	5
S	2	2	2	6
SW	5	7	3	15
W	4	5	4	13
NW	4	4	8	16
Still	2	1	3	6



1.

2.

3.

Tag	Luftdruck (Barometerstand auf 0° und Normal- schwere reducirt) 700 mm +				Temperatur-Extreme (abgelesen 9p) °C			Luft- °C	
	7 a	2 p	9 p	Tages- mittel	Maxi- mum	Mini- mum	Diffe- renz	7 a	2 p
	1	49.7	47.8	48.0	48.5	16.3	5.2	11.1	6.9
2	47.4	44.8	43.7	45.3	15.9	3.9	12.0	6.7	15.4
3	42.0	38.6	37.6	39.4	16.2	6.6	9.6	7.0	16.0
4	36.7	34.7	35.9	35.8	15.3	5.3	10.0	6.3	14.7
5	38.8	41.2	43.5	41.2	13.4	4.3	9.1	5.3	12.8
6	44.5	42.5	40.7	42.6	12.8	2.4	10.4	4.4	11.2
7	40.0	38.6	42.5	40.4	12.2	5.2	7.0	7.6	10.1
8	45.0	45.7	47.1	45.9	9.9	0.5	9.4	2.7	9.1
9	47.6	46.2	46.2	46.7	12.1	3.0	9.1	4.4	11.9
10	45.3	43.8	45.5	44.9	14.1	4.9	9.2	6.6	13.6
11	46.0	46.1	47.4	46.5	10.2	3.4	6.8	4.7	10.2
12	45.8	44.1	43.2	44.4	13.8	4.7	9.1	6.1	13.2
13	43.0	41.8	42.0	42.3	13.8	6.9	6.9	7.5	13.2
14	43.1	42.1	42.2	42.5	14.3	6.3	8.0	6.7	13.8
15	41.1	39.5	38.7	39.8	13.8	7.9	5.9	8.9	13.3
16	36.2	35.7	36.0	36.0	10.1	7.6	2.5	8.0	9.4
17	37.4	39.4	42.0	39.6	9.4	6.8	2.6	7.6	8.1
18	44.9	46.8	49.3	47.0	9.3	3.8	5.5	5.7	8.1
19	51.9	51.8	53.8	52.5	8.1	1.8	6.3	2.6	7.2
20	55.8	56.5	58.1	56.8	9.3	1.3	8.0	4.1	8.0
21	58.9	56.7	56.2	57.3	13.0	-0.7	13.7	1.8	12.3
22	56.2	57.8	60.8	58.3	12.4	3.3	9.1	6.3	9.2
23	62.3	59.3	57.9	59.8	17.8	2.1	15.7	5.0	17.1
24	57.1	56.1	57.0	56.7	17.2	11.6	5.6	12.7	16.2
25	57.1	56.1	55.8	56.3	12.5	6.7	5.8	9.9	10.1
26	54.4	50.4	44.4	49.7	10.7	3.1	7.6	4.7	10.2
27	43.0	45.3	45.5	44.6	8.2	2.2	6.0	3.3	8.1
28	45.4	45.8	47.8	46.3	10.2	0.7	9.5	3.5	9.3
29	48.3	46.8	46.6	47.2	11.1	1.3	9.8	3.8	10.2
30	44.4	44.2	44.9	44.5	12.2	5.1	7.1	6.3	11.2
Monats- Mittel	47.0	46.2	46.7	46.6	12.5	4.2	8.3	5.9	11.6

PENTADEN-ÜBERSICHT

Pentade	Luftdruck		Lufttemperatur		Bewölkung		Niederschlag
	Summe	Mittel	Summe	Mittel	Summe	Mittel	Summe
1.—5. April	210.2	42.0	50.2	10.0	7.4	1.5	—
6.—10. "	220.5	44.1	37.6	7.5	31.4	6.3	3.7
11.—15. "	215.5	43.1	48.3	9.7	39.3	7.9	2.8
16.—20. "	231.9	46.4	30.2	6.0	31.3	6.3	5.3
21.—25. "	288.4	57.7	50.2	10.0	34.0	6.8	3.6
26.—30. "	232.3	46.5	31.6	6.3	33.7	6.7	16.9

temperatur		Absolute Feuchtigkeit mm				Relative Feuchtigkeit %				Tag
9p	Tages- mittel	7a	2p	9p	Tages- mittel	7a	2p	9p	Tages- mittel	
9.4	10.4	5.9	5.5	5.6	5.7	80	42	63	61.7	1
9.9	10.5	4.9	4.6	4.8	4.8	67	35	52	51.3	2
10.4	11.0	4.9	5.2	4.7	4.9	66	38	50	51.3	3
9.6	10.0	5.2	5.1	5.7	5.3	74	42	64	60.0	4
7.5	8.3	5.7	6.2	6.0	6.0	86	56	77	73.0	5
7.7	7.8	5.6	7.1	6.6	6.4	90	72	85	82.3	6
5.3	7.1	5.3	6.2	5.4	5.6	68	67	82	72.3	7
4.3	5.1	4.0	5.9	5.9	5.3	87	68	96	83.7	8
7.8	8.0	5.7	5.9	6.2	5.9	92	57	79	76.0	9
9.1	9.6	5.5	5.0	6.3	5.6	76	43	73	64.0	10
6.8	7.1	5.7	6.3	6.6	6.2	89	68	90	82.3	11
9.8	9.7	5.9	5.1	5.3	5.4	84	45	58	62.3	12
10.3	10.3	5.3	5.7	5.8	5.6	69	50	63	60.7	13
11.3	10.8	6.7	6.2	6.6	6.5	91	53	66	70.0	14
9.6	10.4	6.3	8.3	7.3	7.3	74	73	83	76.7	15
8.0	8.4	6.9	6.7	6.6	6.7	86	76	82	81.3	16
7.3	7.6	6.1	6.0	6.0	6.0	79	74	79	77.3	17
3.8	5.4	5.8	4.1	4.6	4.8	85	52	77	71.3	18
3.6	4.2	4.2	4.2	4.6	4.3	75	55	78	69.3	19
3.2	4.6	4.1	4.4	4.6	4.4	68	56	80	68.0	20
6.5	6.8	4.1	4.4	4.9	4.5	78	41	68	62.3	21
7.8	7.8	5.5	7.8	6.9	6.7	78	91	88	85.7	22
14.7	12.9	5.5	5.5	7.9	6.3	84	33	63	61.7	23
12.5	13.5	9.1	9.9	8.3	9.1	85	72	77	78.0	24
8.3	9.2	6.3	7.1	6.4	6.6	69	78	78	75.0	25
3.9	5.7	5.3	4.5	5.7	5.2	82	48	93	74.3	26
3.8	4.8	4.7	3.8	5.0	4.5	82	49	83	71.3	27
4.9	5.6	4.6	4.4	4.7	4.6	78	50	71	66.3	28
6.5	6.8	4.8	3.9	5.6	4.8	80	43	78	67.0	29
8.6	8.7	6.3	5.3	7.1	6.2	88	53	86	75.7	30
7.7	8.3	5.5	5.7	5.9	5.7	79.7	56.2	75.4	70.4	

	Maximum	am	Minimum	am	Differenz
Luftdruck	762.3	23.	734.7	4.	27.6
Lufttemperatur	17.8	23.	-0.7	21.	18.5
Absolute Feuchtigkeit	9.9	24.	3.8	27.	6.1
Relative Feuchtigkeit	96	8.	35	2.	61
Grösste tägliche Niederschlagshöhe	14.3 am 27.				
Zahl der heiteren Tage (unter 2,0 im Mittel)					3
" " trübten Tage (über 8,0 im Mittel)					8
" " Sturmtage (Stärke 8 oder mehr)					—
" " Eistage (Maximum unter 0°)					—
" " Frosttage (Minimum unter 0°)					1
" " Sommertage (Maximum 25,0° oder mehr)					—

6.

7.

Tag	Bewölkung				Wind			
	ganz wolkenfrei = 0		ganz bewölkt = 10		Richtung und Stärke			
	Windstille = 0		Orkan = 12		7a	2p	9p	
	7a	2p	9p	Tages- mittel	7a	2p	9p	
1	7	4	0	3.7	. . . 0	NE 2	NE 2	2
2	0	0	0	0.0	E 1	SE 2	E 2	2
3	0	0	0	0.0	E 2	E 2	E 2	2
4	0	0	0	0.0	. . . 0	NE 2	NE 1	1
5	2	7	2	3.7	NE 1	NE 2	NE 1	1
6	10	8	9	9.0	NE 1	NE 1	NE 1	1
7	1	10	6	5.7	. . . 0	SW 2	SW 1	1
8	6	8	4	6.0	W 1	W 1	W 1	1
9	8	6	4	6.0	SW 1	SW 1	. . . 0	0
10	0	6	8	4.7	NE 1	NW 2	NW 1	1
11	10	10	8	9.3	NE 1	E 1	W 1	1
12	2	3	5	3.3	NE 2	E 3	E 3	3
13	10	10	10	10.0	NE 2	E 1	SW 1	1
14	10	6	10	8.7	. . . 0	E 2	NE 3	3
15	7	8	9	8.0	NE 2	NE 4	NE 2	2
16	10	10	10	10.0	NE 2	N 3	N 2	2
17	10	9	10	9.7	N 1	NW 3	N 2	2
18	6	4	0	3.3	N 2	NW 2	N 3	3
19	2	2	6	3.3	NW 2	NW 3	NW 2	2
20	7	8	0	5.0	NW 3	N 2	N 1	1
21	4	4	0	2.7	N 1	S 2	S 1	1
22	10	10	2	7.3	S 1	S 1	W 1	1
23	8	2	10	6.7	W 2	SW 3	NW 3	3
24	10	10	4	8.0	W 2	NW 4	W 1	1
25	8	10	10	9.3	SW 3	N 2	N 1	1
26	4	10	10	8.0	N 1	N 2	NE 3	3
27	10	6	9	8.3	N 2	NW 2	N 1	1
28	7	2	0	3.0	N 1	SW 4	N 3	3
29	4	6	10	6.7	W 3	SW 3	SW 1	1
30	10	3	10	7.7	W 3	NW 4	W 1	1
	6.1	6.1	5.5	5.9	1.5	2.3	Mittel 1.8	1.6

Zahl der Tage mit:

Niederschlag mindestens 1,0 mm . . (● × ▲ △)	7
Niederschlag mehr als 0,2 mm	9
Niederschlag mindestens 0,1 mm	11
Schnee mindestens 0,1 mm (✱)	2
Hagel (▲)	—
Graupeln (△)	—
Tau (b)	—
Reif (l)	—
Glätteis (2)	—
Nebel (≡)	—
Gewitter (nah ☄, fern ☄)	—
Wetterleuchten (◁)	—

Niederschlag

Höhe der chnee-decke in cm 7 a

Bemerkungen

Tag

Höhe 7a mm	Form und Zeit	Höhe der chnee-decke in cm 7 a	Bemerkungen	Tag
—	—	—	—	1
—	—	—	—	2
—	—	—	—	3
—	—	—	—	4
—	—	—	—	5
—	—	—	—	6
—	⊙ tr. einz. a + p	—	—	7
0.0	⊙ ⁰ ztw. 12 ¹ / ₂ —1 p, ⊙ ⁰ · 1 4 ¹ / ₂ —5 + 5 ¹ / ₂ —7 p	—	—	8
3.7	⊙ n, ⊙ tr. einz. zw. 12 + 12 ¹ / ₂ p	—	—	9
0.0	⊙ tr. einz. p	—	—	10
0.0	⊙ ⁰ · 1 4 ³ / ₄ —6 p	—	—	11
2.0	—	—	—	12
—	⊙ tr. einz. zw. 4 ¹ / ₂ —5 ¹ / ₂ p	—	—	13
0.8	⊙ n	—	—	14
—	—	—	—	15
3.5	⊙ n, ⊙ ⁰ I fast ohne Unterbr.—II + ztw.—III	—	—	16
1.7	—	—	—	17
—	—	—	—	18
—	⊗ ⁰ ⊙ ⁰ a oft	—	—	19
0.1 ⊗	⊙ tr. a + p ztw.	—	—	20
0.0	—	—	—	21
—	⊙ ⁰ a ohne Unterbr.—II—2 ¹ / ₂ p	—	—	22
3.5	—	—	—	23
—	⊙ ⁰ 4 ¹ / ₂ —5 ¹ / ₂ p	—	—	24
0.1	⊙ ⁰ II a—II ztw., ⊙ tr. einz. p	—	—	25
0.9	⊙ ⁰ 3 ¹ / ₂ —III ununterbr.	—	—	26
14.3 ⊗	⊙ + ⊗ n	—	—	27
—	—	—	—	28
—	⊙ ⁰ 8 ¹ / ₂ p—n	—	—	29
1.7	⊙ n	—	—	30
32.3	Monatssumme.	—	—	

Wind-Verteilung.				
	7a	2p	9p	Summe
N	6	4	7	17
NE	8	5	7	20
E	2	5	3	10
SE	—	1	—	1
S	1	2	1	4
SW	2	5	3	10
W	5	1	5	11
NW	2	7	3	12
Still	4	—	1	5

1.

2.

3.

Tag	Luftdruck (Barometerstand auf 0° und Normal- schwere reduziert) 700 mm +				Temperatur-Extreme (abgelesen 9p) °C			Luft- °C	
	7 a	2 p	9 p	Tages- mittel	Maxi- mum	Mini- mum	Diffe- renz	7 a	2 p
1	47.4	49.0	50.0	48.8	10.6	5.2	5.4	6.8	8.5
2	50.5	47.2	44.6	47.4	9.8	4.1	5.7	5.8	7.1
3	46.0	43.3	44.3	44.5	11.8	6.1	5.7	7.9	11.0
4	45.0	46.8	50.4	47.4	12.2	10.4	1.8	11.7	11.1
5	52.0	49.6	46.9	49.5	21.0	7.1	13.9	11.2	20.0
6	47.6	47.4	45.6	46.9	22.4	12.8	9.6	14.3	20.9
7	49.3	54.0	55.6	53.0	19.5	10.3	9.2	16.1	15.6
8	57.2	52.9	51.8	54.0	21.8	6.5	15.3	10.1	21.3
9	55.1	55.3	54.9	55.1	19.2	10.2	9.0	11.3	18.8
10	54.1	52.1	52.0	52.7	23.7	9.6	14.1	15.1	23.7
11	53.1	51.6	51.3	52.0	26.5	10.4	16.1	14.8	25.9
12	51.7	50.0	49.4	50.4	27.9	12.6	15.3	16.2	27.6
13	49.4	48.3	51.6	49.8	24.7	13.4	11.3	16.6	23.9
14	52.6	49.9	48.8	50.4	21.6	10.3	11.3	12.4	21.5
15	46.8	46.4	46.5	46.6	20.3	11.7	8.6	14.5	16.9
16	47.7	48.6	50.4	48.9	15.4	10.6	4.8	12.9	14.2
17	50.9	50.8	51.3	51.0	12.3	7.8	4.5	11.3	10.7
18	51.1	51.3	52.4	51.6	10.2	4.6	5.6	5.3	9.1
19	51.7	49.9	49.9	50.5	11.6	3.1	8.5	5.8	10.9
20	48.0	47.4	48.3	47.9	12.1	5.7	6.4	8.4	11.6
21	48.8	48.3	48.8	48.6	15.9	3.8	12.1	8.0	15.2
22	50.5	49.8	49.6	50.0	18.1	10.4	7.7	12.3	17.3
23	48.8	46.9	46.9	47.5	24.1	9.1	15.0	12.9	23.9
24	48.8	49.9	52.3	50.3	24.5	11.4	13.1	14.8	24.1
25	53.6	52.3	51.6	52.5	25.4	11.7	13.7	15.4	25.4
26	51.0	50.4	51.1	50.8	26.1	14.9	11.2	19.0	25.6
27	51.5	51.2	51.7	51.5	22.1	15.4	6.7	16.9	21.4
28	52.7	51.4	52.8	52.3	21.7	9.5	12.2	13.4	21.3
29	54.2	53.0	54.3	53.8	18.1	8.1	10.0	10.5	17.7
30	55.9	54.3	53.5	54.6	19.7	6.7	13.0	11.4	18.5
31	50.9	46.3	42.8	46.7	23.2	8.6	14.6	12.2	22.4
Monats- Mittel	50.8	49.9	50.0	50.2	19.1	9.1	10.0	12.1	18.2

PENTADEN - ÜBERSICHT

Pentade	Luftdruck		Lufttemperatur		Bewölkung		Niederschlag
	Summe	Mittel	Summe	Mittel	Summe	Mittel	Summe
1.—5. Mai	237.6	47.5	51.4	10.3	42.7	8.5	20.2
6.—10. "	261.7	52.3	78.1	15.6	25.4	5.1	3.2
11.—15. "	249.2	49.8	88.7	17.7	17.9	3.6	8.7
16.—20. "	249.9	50.0	45.0	9.0	38.3	7.7	1.1
21.—25. "	248.9	49.8	80.5	16.1	24.9	5.0	5.2
26.—30. "	263.0	52.6	81.6	16.3	17.7	3.5	3.0

4.

5.

temperatur		Absolute Feuchtigkeit mm				Relative Feuchtigkeit %				Tag
9p	Tages- mittel	7 a	2p	9p	Tages- mittel	7 a	2p	9p	Tages- mittel	
5.2	6.4	6.6	5.6	5.9	6.0	90	67	89	82.0	1
7.1	6.8	5.9	5.7	6.7	6.1	87	76	88	83.7	2
11.5	10.5	6.3	8.6	8.5	7.8	79	87	85	83.7	3
10.9	11.2	7.5	9.2	8.4	8.4	74	94	87	85.0	4
17.4	16.5	8.6	10.6	9.9	9.7	86	61	68	71.7	5
19.1	18.4	10.2	11.6	9.9	10.6	85	64	60	69.7	6
10.4	13.1	9.8	8.4	8.2	8.8	72	63	88	74.3	7
13.9	14.8	7.9	8.7	10.7	9.1	86	46	92	74.7	8
12.9	14.0	8.5	8.2	9.0	8.6	85	51	82	72.7	9
16.1	17.8	7.8	10.3	10.3	9.5	61	48	76	61.7	10
18.3	19.3	10.2	9.6	10.0	9.9	82	39	63	61.3	11
19.2	20.6	10.4	10.1	11.3	10.6	76	37	68	60.3	12
15.8	18.0	11.0	11.6	11.9	11.5	78	53	89	73.3	13
13.9	15.4	7.2	8.2	9.1	8.2	68	43	77	62.7	14
15.0	15.4	10.0	10.6	11.2	10.6	82	74	88	81.3	15
10.6	12.1	9.1	9.5	7.7	8.8	83	79	81	81.0	16
7.8	9.4	7.2	5.0	5.4	5.9	72	53	68	64.3	17
5.7	6.4	5.3	5.2	5.4	5.3	80	61	79	73.3	18
7.9	8.1	5.0	4.8	5.3	5.0	73	50	67	63.3	19
8.1	9.0	5.7	5.6	6.9	6.1	69	55	86	70.0	20
13.3	12.4	6.3	6.1	8.0	6.8	79	48	71	66.0	21
13.4	14.1	9.8	9.5	9.9	9.7	93	65	87	81.7	22
15.5	17.0	9.5	10.1	12.2	10.6	87	46	93	75.3	23
16.0	17.7	11.3	11.0	11.9	11.4	90	59	88	76.0	24
18.2	19.3	10.8	10.3	12.2	11.1	83	44	78	68.3	25
18.1	20.2	12.7	13.5	12.7	13.0	78	56	82	72.0	26
16.2	17.7	10.8	10.8	8.7	10.1	76	57	63	65.3	27
13.7	15.5	7.7	7.9	7.5	7.7	67	42	64	57.7	28
12.5	13.3	5.9	6.4	5.9	6.1	63	42	54	53.0	29
14.9	14.9	5.5	6.9	7.6	6.7	55	44	60	53.0	30
18.5	17.9	7.6	8.3	10.1	8.7	72	42	63	59.0	31
13.5	14.3	8.3	8.6	8.9	8.6	77.8	56.0	76.9	70.2	

	Maximum	am	Minimum	am	Differenz
Luftdruck	757.2	8.	742.8	31.	14.4
Lufttemperatur	27.9	12.	3.1	19.	24.8
Absolute Feuchtigkeit	13.5	26.	4.8	19.	8.7
Relative Feuchtigkeit	94	4.	37	12.	57
Grösste tägliche Niederschlagshöhe				8.7 am 14.	
Zahl der heiteren Tage (unter 2,0 im Mittel)					7
„ „ trübten Tage (über 8,0 im Mittel)					8
„ „ Sturmtage (Stärke 8 oder mehr)					—
„ „ Eistage (Maximum unter 0°)					—
„ „ Frosttage (Minimum unter 0°)					—
„ „ Sommertage (Maximum 25,00 oder mehr)					4

6.

7.

Tag	Bewölkung				Wind					
	ganz wolkenfrei = 0		ganz bewölkt = 10		Richtung und Stärke					
	7 a	2 p	9 p	Tages- mittel	Windstille = 0		Orkan = 12			
	7 a	2 p	9 p		7 a	2 p	9 p			
1	10	8	8	8.7	SW 3	W 4	N 2			
2	6	10	10	8.7	SW 3	SW 4	SW 3			
3	10	10	10	10.0	SW 3	SW 4	SW 3			
4	10	10	10	10.0	SW 3	W 2	...	0		
5	3	3	10	5.3	W 1	E 3	E 1			
6	9	9	8	8.7	NE 1	W 1	NE 1			
7	10	10	0	6.7	W 1	SW 1	SE 1			
8	0	8	10	6.0	SE 1	E 3	SW 3			
9	8	0	0	2.7	S 1	S 2	S 1			
10	0	4	0	1.3	S 2	SE 2	S 1			
11	2	2	0	1.3	SE 2	E 2	...	0		
12	0	1	0	0.3	SE 1	SE 2	SE 1			
13	7	2	10	6.3	SW 1	SW 2	SW 2			
14	0	0	0	0.0	SW 3	SW 3	SW 1			
15	10	10	10	10.0	...	0	SW 2	SW 1		
16	10	8	10	9.3	W 1	NW 3	NW 1			
17	10	7	7	8.0	NW 3	W 3	NW 3			
18	9	5	0	4.7	NW 3	NW 4	N 2			
19	2	9	8	6.3	N 3	NE 3	NE 1			
20	10	10	10	10.0	NW 1	NW 3	NW 1			
21	8	6	10	8.0	SE 2	SW 2	SE 1			
22	10	10	2	7.3	SW 1	W 2	SW 1			
23	2	6	8	5.3	SE 2	SE 2	NE 1			
24	7	3	2	4.0	E 2	S 4	SW 1			
25	1	0	0	0.3	...	0	SE 1	...	0	
26	8	6	10	8.0	NE 1	SE 2	SW 1			
27	8	2	2	4.0	NW 2	NW 3	N 2			
28	2	2	0	1.3	NW 2	NW 2	NE 2			
29	2	3	0	1.7	NE 3	N 2	N 4			
30	0	2	6	2.7	N 1	SW 2	...	0		
31	6	4	10	6.7	SE 2	SE 2	SE 2			
	5.8	5.5	5.5	5.6	1.8	2.5	1.4			
						Mittel 1.9				

Zahl der Tage mit:

Niederschlag mindestens 1,0 mm . . . (⊙ × ▲ △)	9
Niederschlag mehr als 0,2 mm . . . " " " "	12
Niederschlag mindestens 0,1 mm . . . " " " "	12
Schnee mindestens 0,1 mm (✱)	—
Hagel (▲)	—
Graupeln (△)	—
Tau (b)	7
Reif (l)	—
Glatteis (2)	—
Nebel (≡)	—
Gewitter (nah ☄, fern T)	4
Wetterleuchten (<)	—

Niederschlag		Höhe der Schneedecke in cm 7a	Bemerkungen	Tage
Höhe 7a mm	Form und Zeit			
1.7	● n, ● ⁰ schauer oft a—II	—		1
2.6	● n, ● ⁰ 12 ³ / ₄ p ztw.—II + p fast ohne Unterbr.	—		2
5.3	● n, ● ⁰ ohne Unterbr. a—II—6 ¹ / ₂ p. ztw. ● tr. einz.—III	—		3
7.3	● ⁰ fast ohne Unterbr. a—II, ● ⁰ ztw. p	—		4
3.3	—	—		5
—	—	—	⌒	6
—	● tr. ztw. 2 ³³ —3 ²⁰ p	—	⌒	7
0.0	● ⁰ 6 ¹ / ₂ p ztw.—8 ¹ / ₄ , ● ⁰ · 1 8 ²⁷ —9 ¹ / ₄ p	—	⌒ 1 8 ²³ —9 ¹ / ₂ p	8
3.2	● n	—		9
—	—	—		10
—	—	—	⌒	11
—	—	—		12
—	● ⁰ 6 ¹ / ₂ p—III + ztw.—n	—		13
8.7	● n	—		14
—	● tr. einz. zw. 12 + 2 p + ● ⁰ ztw. p	—	⌒	15
0.8	● n, ● tr. einz. a + p	—		16
0.0	—	—		17
—	● ¹ ztw. a	—		18
0.3	● tr. einz. ztw p	—		19
0.0	● ⁰ 7 ¹ / ₄ —7 ³ / ₄ p	—		20
0.0	—	—	⌒	21
0.6	● n	—		22
—	● ¹ 6 ¹ / ₂ —7 ¹ / ₂ p	—	⌒ 1 6 ³⁸ —7 ¹ / ₂	23
4.6	● ⁰ schauer 5 ¹⁵ —5 ¹⁸ p	—	SW—NE	24
0.0	—	—	⌒	25
—	● ⁰ · 1 4 ¹ / ₂ —6 p, ● ⁰ 7 ³ / ₄ —III ztw.	—	⌒ 3 ¹⁸ —5 ¹ / ₂ p	26
3.0	—	—	W—E	27
—	—	—		28
—	—	—		29
—	—	—		30
—	● ⁰ · 1 9 ⁵⁸ —10 ²⁸ p	—	⌒ 0 9 ³ / ₄ —10 ³ / ₄ p	31
41.4	Monatssumme.	—		

Wind-Verteilung.				
	7a	2p	9p	Summe
N	2	1	4	7
NE	3	1	4	8
E	1	3	1	5
SE	6	6	4	16
S	2	2	2	6
SW	7	8	9	24
W	3	5	—	8
NW	5	5	3	13
Still	2	—	4	6

Tag	1. Luftdruck (Barometerstand auf 0° und Normal- schwere reducirt) 700 mm +				2. Temperatur-Extreme (abgelesen 9 p) °C			3. Luft- °C	
	7 a	2 p	9 p	Tages- mittel	Maxi- mum	Mini- mum	Dife- renz	7 a	2 p
	1	42.2	42.2	42.6	42.3	19.6	13.2	6.4	16.9
2	43.4	43.8	45.9	44.4	18.6	12.4	6.2	14.5	16.6
3	49.1	48.9	49.9	49.3	15.7	10.6	5.1	11.1	15.3
4	51.9	53.7	54.7	53.4	14.4	8.7	5.7	10.9	13.7
5	53.7	49.8	46.9	50.1	20.2	7.9	12.3	10.4	19.4
6	48.7	48.8	48.4	48.6	17.5	12.2	5.3	12.7	14.7
7	50.8	51.6	53.1	51.8	16.9	7.8	9.1	10.5	15.1
8	53.7	52.6	52.5	52.9	19.6	8.5	11.1	12.0	18.9
9	52.5	50.3	49.6	50.8	23.7	9.6	14.1	13.0	23.7
10	49.5	49.4	51.6	50.2	23.5	12.3	11.2	16.7	21.7
11	53.2	52.7	52.0	52.6	22.5	12.7	9.8	15.2	21.5
12	49.3	48.8	51.2	49.8	25.0	13.1	11.9	17.5	20.0
13	52.0	52.7	53.7	52.8	18.7	13.9	4.8	15.2	17.4
14	55.3	55.2	55.9	55.5	20.8	13.3	7.5	14.9	20.5
15	56.4	54.8	53.2	54.8	23.5	10.3	13.2	13.8	23.0
16	54.3	54.6	57.2	55.4	20.4	11.4	9.0	16.3	19.7
17	57.2	55.3	54.9	55.8	19.4	6.7	12.7	10.6	18.7
18	54.8	52.0	50.9	52.6	21.8	9.0	12.8	12.5	21.3
19	51.1	52.7	54.1	52.6	20.4	13.5	6.9	17.0	19.9
20	54.9	51.9	48.8	51.9	24.6	9.8	14.8	14.1	23.2
21	46.0	49.3	53.4	49.6	23.7	14.9	8.8	17.2	20.8
22	54.9	52.0	51.7	52.9	23.2	8.8	14.4	12.9	22.1
23	52.3	52.9	54.4	53.2	19.1	13.1	6.0	15.9	18.5
24	55.6	54.2	51.9	53.9	18.9	12.1	6.8	13.3	17.8
25	48.9	49.4	49.9	49.4	17.7	10.3	7.4	13.7	16.9
26	49.0	51.0	52.8	50.9	20.7	11.9	8.8	13.6	19.9
27	54.3	54.7	54.3	54.4	22.8	11.9	10.9	15.7	21.7
28	53.2	50.6	51.8	51.9	27.4	12.4	15.0	15.8	27.1
29	50.9	49.2	48.1	49.4	23.8	14.7	9.1	16.6	19.8
30	48.1	45.5	46.0	46.5	19.2	13.1	6.1	14.3	14.9
Monats- Mittel	51.6	51.0	51.4	51.3	20.8	11.3	9.4	14.2	19.3

PENTADEN-ÜBERSICHT

Pentade	Luftdruck		Lufttemperatur		Bewölkung		Niederschlag
	Summe	Mittel	Summe	Mittel	Summe	Mittel	Summe
31. Mai—4. Juni	236.1	47.2	72.4	14.5	44.1	8.8	10.5
5.—9. „	254.2	50.8	73.4	14.7	32.7	6.5	8.6
10.—14. „	260.9	52.2	85.9	17.2	40.7	8.1	14.5
15.—19. „	271.2	54.2	79.9	16.0	23.4	4.7	3.5
20.—24. „	261.5	52.3	83.1	16.6	28.7	5.7	3.3
25.—29. „	256.0	51.2	87.3	17.5	38.0	7.6	0.9

temperatur		Absolute Feuchtigkeit mm				Relative Feuchtigkeit %				Tag
9p	Tages- mittel	7 a	2p	9p	Tages- mittel	7 a	2p	9p	Tages- mittel	
13.8	15.2	11.5	11.0	10.5	11.0	81	81	91	84.3	1
14.3	14.9	10.2	10.5	10.4	10.4	84	74	86	81.3	2
11.2	12.2	8.1	6.6	6.7	7.1	82	51	67	66.7	3
12.1	12.2	7.8	8.3	8.8	8.3	81	71	84	78.7	4
16.0	15.4	8.7	9.0	9.5	9.1	93	54	70	72.3	5
12.7	13.2	9.4	10.0	9.8	9.7	87	81	90	86.0	6
13.4	13.1	7.4	6.9	8.0	7.4	79	54	70	67.7	7
13.1	14.3	8.6	9.4	10.0	9.3	83	57	90	76.7	8
16.4	17.4	9.5	10.8	10.6	10.3	86	50	76	70.7	9
16.7	18.0	11.0	13.2	13.9	12.7	77	69	98	81.3	10
17.2	17.8	11.9	11.5	11.5	11.6	92	61	79	77.3	11
16.5	17.6	11.5	15.4	12.1	13.0	77	89	86	84.0	12
15.5	15.9	12.4	10.7	9.9	11.0	97	72	76	81.7	13
15.5	16.6	9.6	9.3	11.0	10.0	76	52	84	70.7	14
17.0	17.7	9.5	10.9	12.2	10.9	81	53	85	73.0	15
11.4	14.7	10.6	7.5	8.0	8.7	77	44	79	66.7	16
14.4	14.5	7.6	7.6	8.9	8.0	80	47	73	66.7	17
17.0	17.0	8.8	7.9	10.8	9.2	82	42	75	66.3	18
13.5	16.0	8.7	7.5	8.9	8.4	61	43	77	60.3	19
18.4	18.5	8.3	9.6	12.2	10.0	69	45	78	64.0	20
13.9	16.4	11.4	8.9	8.3	9.5	78	49	70	65.7	21
16.6	17.0	8.3	9.7	11.6	9.9	75	49	82	68.7	22
15.4	16.3	10.1	6.9	8.0	8.3	75	44	61	60.0	23
14.2	14.9	8.3	6.8	9.4	8.2	73	45	78	65.3	24
14.2	14.8	9.9	7.0	7.9	8.3	86	49	65	66.7	25
16.6	16.7	10.3	9.0	9.7	9.7	89	52	69	70.0	26
16.7	17.7	10.7	11.1	12.1	11.3	81	58	85	74.7	27
17.4	19.4	11.5	12.2	12.8	12.2	86	45	87	72.7	28
19.2	18.7	12.4	14.3	12.6	13.1	89	83	76	82.7	29
14.4	14.5	8.4	11.2	10.7	10.1	70	89	88	82.3	30
15.2	16.0	9.7	9.7	10.2	9.9	80.9	53.4	79.2	72.8	

	Maximum	am	Minimum	am	Differenz
Luftdruck	757.2	16. 17.	742.2	1.	15.0
Lufttemperatur	27.4	28.	6.7	17.	20.7
Absolute Feuchtigkeit ;	15.4	12.	6.6	3.	8.8
Relative Feuchtigkeit .	98	10.	42	18.	56
Grösste tägliche Niederschlagshöhe	7.3 am 3.				
Zahl der heiteren Tage (unter 2,0 im Mittel)					1
" " trüben Tage (über 8,0 im Mittel)					10
" " Sturmtage (Stärke 8 oder mehr)					—
" " Eistage (Maximum unter 0°)					—
" " Frosttage (Minimum unter 0°)					—
" " Sommertage (Maximum 25,0° oder mehr)					2

6.

7.

Tag	Bewölkung				Wind					
	ganz wolkenfrei = 0		ganz bewölkt = 10		Richtung und Stärke					
	Windstille = 0		Orkan = 12		7 a		2 p		9 p	
	7 a	2 p	9 p	Tages- mittel	7 a	2 p	9 p	7 a	2 p	9 p
1	10	10	6	8.7	SW 3	SW 2	SW 1			
2	10	10	9	9.7	SW 2	SW 4	SW 2			
3	10	7	10	9.0	SW 3	W 4	SW 3			
4	10	10	10	10.0	SW 2	NW 3	W 1			
5	9	2	9	6.7	SW 2	S 1	SE 1			
6	10	10	10	10.0	SW 3	SW 3	SW 1			
7	10	10	8	9.3	SW 3	SW 2	...	0		
8	7	7	6	6.7	W 1	S 2	N 1			
9	0	0	0	0.0	...	S 3	...	0		
10	8	10	6	8.0	...	SW 3	W 2			
11	8	6	8	7.3	W 1	S 2	SE 1			
12	8	10	8	8.7	NE 3	SW 1	...	0		
13	10	10	9	9.7	W 1	NW 1	NW 1			
14	8	8	5	7.0	NW 1	NW 1	E 1			
15	2	3	4	3.0	SE 3	SW 2	SE 1			
16	6	4	4	4.7	SW 1	W 4	N 1			
17	4	8	2	4.7	...	N 2	N 1			
18	4	4	10	6.0	N 3	SW 2	S 1			
19	4	7	4	5.0	W 3	NW 3	NW 1			
20	2	0	8	3.3	SW 3	SW 3	SE 2			
21	3	6	2	3.7	...	W 4	NW 2			
22	4	6	10	6.7	...	NW 2	NW 1			
23	9	6	9	8.0	SW 3	SW 5	W 1			
24	7	10	4	7.0	SW 2	W 3	...	0		
25	10	10	10	10.0	W 2	W 4	SW 5			
26	10	6	7	7.7	SW 3	W 4	SW 2			
27	10	10	2	7.3	...	SW 1	SW 2			
28	0	7	2	3.0	SW 1	...	SW 2			
29	10	10	10	10.0	SW 2	S 3	SW 1			
30	4	10	10	8.0	N 2	...	N 2			
	6.9	7.2	6.7	7.0	1.8	2.5	1.3			
						Mittel 1.9				

Zahl der Tage mit:

Niederschlag mindestens 1,0 mm . . . (● × ▲ △)	10
Niederschlag mehr als 0,2 mm . . . " " " "	16
Niederschlag mindestens 0,1 mm . . . " " " "	16
Schnee mindestens 0,1 mm (×)	—
Hagel (▲)	—
Graupeln (△)	—
Tau (p)	8
Reif (l)	—
Glatteis (2)	—
Nebel (≡)	—
Gewitter (nah ☄, fern ☄)	6
Wetterleuchten (<)	—

Niederschlag		Höhe der Schnees- decke in cm 7 a	Bemer- kungen	Tage
Höhe 7 a mm	Form und Zeit			
1.3	☉ ⁰ 10 ¹⁰ a + ztw.—II, ☉ ⁰ ztw. p	—	445—5 p	1
1.3	☉ ⁰ · 1 schauer a oft—II + einz. p, ☉ ² schauer 7 ⁴⁶ —7 ⁵⁸ p +	—	mehrere T 11 ⁰⁸	2
7.3	☉ tr. ztw. a, ☉ ⁰ schauer ztw. p	—	[—11 ³⁰ a	3
0.6	—	—	—	4
—	—	—	—	5
2.0	☉ n, ☉ ⁰ I + oft a—II, ☉ ² schauer 3 ³³ —3 ⁴⁰ p + oft p	—	—	6
6.6	☉ n	—	—	7
—	—	—	—	8
—	—	—	—	9
—	☉ ¹ · 2 3 ²³ —4 p, ☉ ⁰ ztw. p	☉ R ¹	☉ ¹ 3 ²⁹ —4 p S—N	10
6.7	☉ ⁰ schauer 10 ^{1/2} —10 ^{3/4} a	—	☉	11
0.5	☉ ⁰ — 2 12 ⁵³ —14 ³ p	☉ R ¹	☉ ¹ 12 ⁴⁰ —1 ^{3/4} p S—N	12
6.5	☉ n, ☉ ¹ I u. ztw. a—II	—	—	13
0.8	—	—	—	14
—	—	—	☉	15
3.5	☉ n	—	R n	16
—	—	—	☉	17
—	—	—	☉	18
—	—	—	—	19
—	—	—	—	20
—	—	—	—	21
—	☉ ⁰ · 1 8 ⁴³ —III	—	—	22
2.8	☉ n, ☉ ¹ schauer 9 ^{1/4} —9 ²⁵ a	—	—	23
0.5	ztw. ☉ a	—	—	24
0.2	☉ n	—	—	25
0.7	☉ n	—	—	26
—	—	—	—	27
—	—	—	☉	28
—	☉ ¹ 14 ² —2 ⁰⁸ p	R ⁰ SW—NE	☉ ¹ 13 ⁶ —2 ^{1/4} p	29
1.6	☉ ⁰ 10 ^{1/4} a—II ununterbr.—6 p ztw.	—	—	30
42.9	Monatssumme.	—	—	

Wind-Verteilung.				
	7 a	2 p	9 p	Summe
N	2	1	4	7
NE	1	—	—	1
E	—	—	1	1
SE	1	—	4	5
S	—	5	1	6
SW	14	11	9	34
W	5	6	3	14
NW	1	5	4	10
Still	6	2	4	12

Tag	1.				2.			3.	
	Luftdruck (Barometerstand auf 0° und Normal- schwere reduziert) 700 mm +				Temperatur-Extreme (abgelesen 9 p) °C			Luft- °C	
	7 a	2 p	9 p	Tages- mittel	Maxi- mum	Mini- mum	Diffe- renz	7 a	2 p
1	45.8	45.9	46.5	46.1	16.9	12.6	4.3	13.1	16.4
2	45.1	45.9	48.5	46.5	16.2	10.8	5.4	14.7	14.0
3	50.7	50.0	50.6	50.4	17.3	10.1	7.2	12.0	16.6
4	51.6	50.6	50.0	50.7	22.9	10.9	12.0	12.9	22.0
5	52.5	53.1	53.0	52.9	22.8	13.3	9.5	16.4	21.6
6	54.8	53.0	53.7	53.8	21.4	12.2	9.2	14.2	20.3
7	53.1	52.0	52.1	52.4	20.1	10.5	9.6	13.0	19.5
8	51.0	51.0	52.0	51.3	19.1	8.2	10.9	12.2	18.5
9	54.9	55.9	56.8	55.9	19.8	9.0	10.8	13.4	18.3
10	56.7	56.6	56.3	56.5	20.1	12.4	7.7	15.4	16.5
11	56.9	59.7	60.9	59.2	16.8	11.1	5.7	11.1	14.8
12	61.4	60.6	59.2	60.4	14.2	9.2	5.0	11.2	13.2
13	57.6	57.3	57.5	57.5	17.9	10.4	7.5	11.8	17.2
14	57.2	56.1	55.4	56.2	21.2	12.1	9.1	13.5	20.7
15	56.2	56.7	57.7	56.9	22.5	13.9	8.6	15.4	21.7
16	58.2	57.1	55.6	57.0	25.1	12.8	12.3	17.1	24.0
17	54.0	53.7	53.3	53.7	18.7	15.0	3.7	15.9	17.4
18	52.0	52.3	52.9	52.4	18.5	13.4	5.1	13.9	17.8
19	53.8	53.4	53.8	53.7	19.9	12.0	7.9	12.5	19.1
20	55.2	54.8	54.2	54.7	19.5	9.3	10.2	12.5	19.0
21	53.7	52.4	52.2	52.8	19.2	7.8	11.4	11.4	18.5
22	52.2	50.1	49.7	50.7	23.4	8.1	15.3	11.5	22.3
23	48.8	48.6	48.5	48.6	19.5	11.6	7.9	13.8	16.4
24	49.6	50.2	50.6	50.1	19.5	12.6	6.9	13.2	18.4
25	50.3	48.5	47.9	48.9	23.2	10.4	12.8	14.2	22.3
26	48.8	49.2	51.4	49.8	22.5	11.1	11.4	15.5	21.7
27	54.2	53.4	53.3	53.6	23.8	11.4	12.4	14.1	22.5
28	53.9	54.2	55.3	54.5	22.4	12.7	9.7	19.3	20.6
29	53.9	51.1	48.8	51.3	28.2	15.3	12.9	17.4	26.9
30	45.4	45.0	47.2	45.9	22.0	16.0	6.0	18.9	21.5
31	48.9	50.5	50.6	50.0	17.9	12.1	5.8	13.2	14.6
Monats- Mittel	52.9	52.5	52.8	52.7	20.4	11.6	8.8	14.0	19.2

PENTADEN - ÜBERSICHT

Pentade	Luftdruck		Lufttemperatur		Bewölkung		Niederschlag
	Summe	Mittel	Summe	Mittel	Summe	Mittel	Summe
30. Juni—4. Juli	240.2	48.0	72.5	14.5	44.3	8.9	21.8
5—9. "	266.3	53.3	79.2	15.8	37.3	7.5	5.9
10.—14. "	289.8	58.0	71.4	14.3	39.6	7.9	19.2
15.—19. "	273.7	54.7	83.5	16.7	21.7	4.3	—
20.—24. "	256.9	51.4	77.2	15.4	17.4	3.5	6.7
25.—29. "	258.1	51.6	95.6	19.1	31.4	6.3	13.0

temperatur		Absolute Feuchtigkeit mm				Relative Feuchtigkeit %				Tag
9 p	Tages- mittel	7 a	2 p	9 p	Tages- mittel	7 a	2 p	9 p	Tages- mittel	
14.5	14.6	10.4	11.8	11.7	11.3	94	85	96	91.7	1
10.8	12.6	11.3	8.9	7.7	9.3	91	75	81	82.3	2
12.8	13.6	7.4	7.4	8.7	7.8	71	53	80	68.0	3
17.0	17.2	9.0	9.4	11.3	9.9	82	48	79	69.7	4
15.5	17.2	12.0	11.3	12.2	11.8	86	60	93	79.7	5
14.7	16.0	10.2	9.9	9.9	10.0	85	55	80	73.3	6
13.3	14.8	9.7	7.0	7.9	8.2	88	41	70	66.3	7
15.4	15.4	8.4	8.9	10.3	9.2	80	56	79	71.7	8
15.8	15.8	8.7	8.1	9.9	8.9	76	52	74	67.3	9
14.0	15.0	10.3	9.7	11.1	10.4	79	69	94	80.7	10
12.4	12.7	8.9	7.7	8.1	8.2	90	62	76	76.0	11
12.2	12.2	6.7	7.5	9.2	7.8	67	66	88	73.7	12
13.7	14.1	9.3	8.2	9.3	8.9	91	56	80	75.7	13
17.6	17.4	9.0	9.5	9.4	9.3	79	52	63	64.7	14
18.1	18.3	10.5	11.4	12.4	11.4	81	60	80	73.7	15
18.1	19.3	11.4	11.4	13.3	12.0	79	51	86	72.0	16
15.8	16.2	10.3	10.5	11.1	10.6	77	71	83	77.0	17
13.9	14.9	9.4	9.2	9.3	9.3	80	61	79	73.3	18
13.9	14.8	6.8	7.9	8.9	7.9	63	48	76	62.3	19
14.9	15.3	7.4	7.5	8.4	7.8	69	46	67	60.7	20
14.3	14.6	8.1	6.9	8.2	7.7	81	44	67	64.0	21
17.7	17.3	8.1	8.1	10.1	8.8	81	41	67	63.0	22
15.4	15.2	10.0	12.7	11.6	11.4	86	92	89	89.0	23
13.8	14.8	8.2	8.9	9.6	8.9	73	57	82	70.7	24
16.9	17.6	8.9	8.7	10.1	9.2	74	44	71	63.0	25
18.1	18.4	12.4	12.2	10.9	11.8	94	63	71	76.0	26
19.6	19.0	10.6	12.1	14.9	12.5	90	60	88	79.3	27
19.3	19.6	14.4	15.4	14.9	14.9	87	85	90	87.3	28
19.9	21.0	14.0	14.4	14.0	14.1	95	55	81	77.0	29
16.2	18.2	13.3	9.7	10.6	11.2	82	51	77	70.0	30
14.3	14.1	9.6	8.9	8.6	9.0	86	72	71	76.3	31
15.5	16.0	9.8	9.7	10.4	10.0	81.8	59.1	79.3	73.4	

	Maximum	am	Minimum	am	Differenz
Luftdruck	761.4	12.	745.0	30.	16.4
Lufttemperatur	28.2	29.	7.8	21.	20.4
Absolute Feuchtigkeit	15.4	28.	6.7	12.	8.7
Relative Feuchtigkeit	96	1.	41	7. 22.	55

Grösste tägliche Niederschlagshöhe	17.9 am 11.
Zahl der heiteren Tage (unter 2,0 im Mittel)	4
" " trübten Tage (über 8,0 im Mittel)	12
" " Sturmtage (Stärke 8 oder mehr)	—
" " Eistage (Maximum unter 0°)	—
" " Frosttage (Minimum unter 0°)	—
" " Sommertage (Maximum 25,0° oder mehr)	2

6.

7.

Tag	Bewölkung				Wind			
	ganz wolkenfrei = 0		ganz bewölkt = 10		Richtung und Stärke			
	7 a	2 p	9 p	Tages- mittel	7 a	2 p	9 p	
1	10	10	10	10.0	...	0	...	0
2	10	10	10	10.0	NE	1	N	4
3	6	9	10	8.3	NW	3	SW	3
4	10	6	8	8.0	SW	3	S	3
5	10	10	10	10.0	S	2	SW	2
6	8	6	8	7.3	SW	2	SW	3
7	9	5	2	5.3	N	2	W	3
8	5	10	9	8.0	...	0	SW	2
9	2	9	9	6.7	SW	2	SW	3
10	9	10	9	9.3	SW	2	W	3
11	10	9	8	9.0	W	1	NW	2
12	6	10	10	8.7	NW	2	NW	3
13	9	8	8	8.3	W	2	NW	2
14	8	4	1	4.3	NW	2	N	4
15	10	7	0	5.7	NW	2	N	1
16	3	2	0	1.7	NE	2	N	2
17	4	8	6	6.0	NW	3	NW	2
18	10	6	0	5.3	NW	3	NW	2
19	9	0	0	3.0	NW	2	N	3
20	2	0	0	0.7	NW	2	NW	2
21	2	2	0	1.3	NW	1	NW	3
22	0	0	8	2.7	NW	2	SW	2
23	10	10	10	10.0	NW	2	W	1
24	6	2	0	2.7	NW	3	NW	2
25	0	0	4	1.3	...	0	E	2
26	10	6	10	8.7	S	1	S	2
27	3	7	10	6.7	NW	1	SW	1
28	10	10	10	10.0	SW	1	SW	1
29	8	4	2	4.7	NW	1	SW	3
30	6	2	9	5.7	SW	2	W	2
31	10	10	7	9.0	W	1	NW	2
	6.9	6.2	6.1	6.4	1.7		2.3	1.5
							Mittel	1.8

Zahl der Tage mit:	
Niederschlag mindestens 1,0 mm . . . (●) ✕ ▲ △	11
Niederschlag mehr als 0,2 mm . . . " " " "	17
Niederschlag mindestens 0,1 mm . . . " " " "	18
Schnee mindestens 0,1 mm (✕)	—
Hagel (▲)	—
Graupeln (△)	—
Tau (b)	13
Reif (T)	—
Glatteis (S)	—
Nebel (III)	—
Gewitter (nah R, fern T)	1
Wetterleuchten (<)	—

Niederschlag		Höhe der Schneedecke in cm 7*	Bemerkungen	Tag
Höhe 7a mm	Form und Zeit			
10.6	⊙ n, ⊙ mit wenig Unterbr. — 1 p, ⊙ ⁰ 2 1/2 — 8 p ztw.	—		1
7.6	⊙ ⁰ ztw. p	—		2
0.9	⊙ n, ⊙ tr. einz. a, ⊙ ¹ 8 1/2 p—III	—		3
1.1	—	—		4
0.3	⊙ n, ⊙ ⁰ · 1 7 ²⁸ —8 1/4 p	—	⊔ n T 645—8 1/4 p	5
4.3	—	—		6
0.3	⊙ n, ⊙ tr. ztw. — 9 3/4, ⊙ ¹ 9 3/4—10 + ⊙ tr. ztw. a	—		7
1.0	—	—	p	8
—	—	—	pp	9
—	⊙ tr. einz. a. ⊙ ² schauer 6 ¹¹ —6 ²⁷ p, ⊙ ⁰ ztw. später, ⊙ ¹ [11 1/4—n	—	p	10
17.9	⊙ n—I, ⊙ ⁰ 7 1/2 + ztw. a	—		11
0.5	—	—		12
0.8	⊙ n	—		13
—	—	—	p	14
—	—	—	pp	15
—	—	—	p	16
—	—	—	pp	17
—	—	—	p	18
—	—	—	p	19
—	—	—	p	20
—	—	—	pp	21
—	—	—	p	22
0.3	⊙ ⁰ 6 1/2 a—I—8 1/2, ⊙ ¹ 12—13 1/4 p, ⊙ ⁰ ztw. p	—		23
6.4	—	—		24
—	—	—	p	25
2.4	⊙ n, ⊙ ⁰ I—9 3/4 a, ⊙ ⁰ schauer 3 ²⁵ —3 ³⁵ p	—		26
2.6	—	—	p	27
0.2	⊙ n, ⊙ ¹ · 2 9 ¹⁰ —9 ³⁰ + ⊙ ¹ 9 ³⁰ —9 ⁵⁰ a, ⊙ ⁰ · 1 12—3 1/2 p ztw.	—		28
7.8	—	—	pp	29
—	⊙ ⁰ · 1 8—9 1/2 + ⊙ ¹ · 2 10 ^{3/4} —11 ⁰⁵ a, ⊙ ⁰ 9 ^{1/4} —9 ⁴⁰ p	—	p	30
9.0	⊙ n, ⊙ ⁰ I—7 1/2 a + ⊙ tr. einz. a, fein, ⊙ ⁰ 1 1/1—II + 6 ³³ [—7 ²⁰ p ztw.	—		31
74.0	Monatsumme.			

Wind-Verteilung.				
	7a	2p	9p	Summe
N	1	5	8	14
NE	2	—	1	3
E	—	1	—	1
SE	—	—	—	—
S	2	2	2	6
SW	6	9	7	22
W	3	4	1	8
NW	14	9	8	31
Still	3	1	4	8

Tag	1.				2.			3.	
	Luftdruck (Barometerstand auf 0° und Normal- schwere reduziert) 700 mm +				Temperatur-Extreme (abgelesen 9 P). °C			Luft- °C	
	7 a	2 p	9 p	Tages- mittel	Maxi- mum	Mini- mum	Diffe- renz	7 a	2 p
1	51.7	52.2	53.3	52.4	19.1	9.5	9.6	12.3	18.3
2	55.9	55.9	55.9	55.9	20.0	10.1	9.9	12.6	19.4
3	55.8	53.9	53.3	54.3	23.2	10.0	13.2	12.6	22.7
4	53.3	51.9	50.8	52.0	28.0	13.5	14.5	16.8	27.7
5	50.6	48.8	48.0	49.1	29.9	15.4	14.5	18.3	28.7
6	47.7	49.8	51.5	49.7	24.5	16.0	8.5	18.6	23.9
7	53.8	54.0	56.7	54.8	21.6	12.3	9.3	15.4	21.1
8	58.5	56.1	55.8	56.8	24.5	10.7	13.8	12.8	23.7
9	55.2	52.3	50.8	52.8	27.1	11.3	15.8	13.8	26.0
10	49.1	48.2	47.8	48.4	26.4	13.4	13.0	15.8	24.7
11	53.4	54.9	56.6	55.0	23.2	14.3	8.9	16.5	22.1
12	57.8	56.3	55.8	56.6	25.4	10.7	14.7	13.5	24.5
13	56.8	56.7	56.8	56.8	25.1	14.3	10.8	18.0	24.1
14	55.8	53.3	51.3	53.5	26.9	14.8	12.1	18.4	26.4
15	47.4	44.1	46.2	45.9	27.7	15.0	12.7	17.7	23.3
16	48.5	49.9	51.7	50.0	19.3	12.5	6.8	15.0	16.3
17	52.1	51.3	52.7	52.0	18.1	10.0	8.1	12.4	17.2
18	53.6	53.0	51.5	52.7	20.2	11.7	8.5	14.6	19.0
19	50.0	50.3	50.9	50.4	22.7	15.9	6.8	16.3	21.8
20	53.5	52.7	54.4	53.5	20.2	12.0	8.2	13.3	19.9
21	57.3	57.8	58.7	57.9	17.8	10.3	7.5	11.5	16.2
22	59.4	59.4	58.0	58.9	16.6	11.8	4.8	12.9	16.0
23	54.7	52.8	52.1	53.2	18.5	11.4	7.1	13.0	17.8
24	52.1	54.1	55.5	53.9	16.3	12.3	4.0	14.3	15.2
25	56.9	55.0	54.5	55.5	20.4	7.2	13.2	9.6	20.0
26	55.0	55.1	55.6	55.2	21.9	9.1	12.8	10.8	21.6
27	54.2	53.2	54.1	53.8	24.7	10.5	14.2	11.6	23.8
28	55.6	53.8	53.0	54.1	23.3	11.6	11.7	13.7	22.6
29	52.8	52.7	52.6	52.7	20.9	15.1	5.8	16.1	19.9
30	54.2	54.6	55.0	54.6	23.6	15.9	7.7	16.5	22.9
31	54.3	51.6	50.2	52.0	25.1	12.9	12.2	14.4	24.8
Monats- Mittel	53.8	53.1	53.3	53.4	22.6	12.3	10.3	14.5	21.7

PENTADEN - ÜBERSICHT

Pentade	Luftdruck		Lufttemperatur		Bewölkung		Niederschlag
	Summe	Mittel	Summe	Mittel	Summe	Mittel	Summe
30. Juli—3. Aug.	258.5	51.7	80.1	16.0	30.4	6.1	9.6
4.—8. "	262.4	52.5	96.5	19.3	13.3	2.7	20.0
9.—13. "	269.6	53.9	92.8	18.6	16.3	3.3	2.3
14.—18. "	254.1	50.8	85.7	17.1	35.9	7.2	5.0
19.—23. "	273.9	54.8	75.3	15.1	35.3	7.1	6.7
24.—28. "	272.5	54.5	77.9	15.6	17.7	3.5	0.1
29. Aug.—2. Sept.	261.3	52.3	87.9	17.6	23.3	4.7	12.8

temperatur		Absolute Feuchtigkeit mm				Relative Feuchtigkeit %				Tag
9p	Tages- mittel	7 a	2p	9p	Tages- mittel	7 a	2p	9p	Tages- mittel	
14.6	15.0	8.1	7.9	8.5	8.2	77	51	69	65.7	1
13.2	14.6	8.6	7.4	9.5	8.5	80	44	85	69.7	2
18.8	18.2	9.4	9.7	12.6	10.6	88	48	78	71.3	3
20.2	21.2	11.6	13.0	13.7	12.8	81	47	78	68.7	4
19.4	21.4	13.3	15.5	15.5	14.8	85	54	92	77.0	5
17.4	19.3	15.5	11.9	10.5	12.6	97	54	71	74.0	6
15.7	17.0	10.3	8.7	8.5	9.2	79	47	64	63.3	7
16.9	17.6	8.1	9.3	10.1	9.2	74	42	71	62.3	8
17.0	18.4	10.3	10.9	10.6	10.6	88	44	74	68.7	9
18.9	19.6	10.8	10.6	14.3	11.9	81	47	88	72.0	10
14.8	17.0	10.5	9.7	10.2	10.1	75	49	82	68.7	11
17.1	18.0	9.8	10.3	11.6	10.6	86	46	80	70.7	12
18.5	19.8	12.1	11.8	12.0	12.0	79	53	76	69.3	13
18.5	20.4	13.4	13.3	13.2	13.3	85	53	83	73.7	14
17.5	19.0	13.1	14.2	12.9	13.4	87	67	87	80.3	15
13.0	14.3	10.4	10.4	9.8	10.2	82	75	89	82.0	16
14.4	14.6	9.3	10.9	11.4	10.5	88	75	94	85.7	17
18.1	17.4	10.9	13.7	14.7	13.1	88	84	95	89.0	18
15.9	17.5	11.8	12.4	10.6	11.6	85	64	79	76.0	19
13.7	15.2	8.8	7.6	8.2	8.2	77	44	70	63.7	20
13.5	13.7	7.7	7.9	7.6	7.7	76	58	66	66.7	21
13.4	13.9	8.8	9.5	9.6	9.3	80	70	85	78.3	22
14.7	15.0	9.3	8.4	10.4	9.4	85	56	84	75.0	23
12.3	13.5	11.0	8.0	7.7	8.9	92	62	72	75.3	24
12.5	13.6	7.8	8.1	9.5	8.5	88	47	89	74.7	25
14.1	15.2	8.9	10.4	10.6	10.0	93	55	90	79.3	26
17.9	17.8	9.4	11.0	11.1	10.5	94	51	73	72.7	27
17.5	17.8	10.5	11.1	13.4	11.7	91	55	90	78.7	28
18.1	18.0	13.1	15.3	13.9	14.1	96	89	90	91.7	29
16.5	18.1	13.1	12.7	12.8	12.9	94	61	92	82.3	30
17.9	18.8	11.4	13.3	13.4	12.7	94	57	88	79.7	31
16.2	17.1	10.6	10.8	11.2	10.9	85.3	56.4	81.4	74.4	

	Maximum	am	Minimum	am	Differenz
Luftdruck	759.4	22.	744.1	15.	15.3
Lufttemperatur	29.9	5.	7.2	25.	22.7
Absolute Feuchtigkeit	15.5	5. 6.	7.4	2.	8.1
Relative Feuchtigkeit	97	6.	42	8.	55

Grösste tägliche Niederschlagshöhe	19.4 am 6.
Zahl der heiteren Tage (unter 2,0 im Mittel)	9
„ „ trüben Tage (über 8,0 im Mittel)	6
„ „ Sturmtage (Stärke 8 oder mehr)	1
„ „ Eistage (Maximum unter 0°)	—
„ „ Frosttage (Minimum unter 0°)	—
„ „ Sommertage (Maximum 25,0° oder mehr)	9

6.

7.

Tag	Bewölkung				Wind		
	ganz wolkenfrei = 0		ganz bewölkt = 10		Richtung und Stärke		
	7 a	2 p	9 p	Tagesmittel	Windstille = 0	Orkan = 12	
1	0	8	10	6.0	SW 2	SW 4	W 1
2	0	5	0	1.7	NW 1	NW 2	... 0
3	6	8	10	8.0	... 0	SW 1	SW 1
4	0	4	0	1.3	SW 1	SW 2	SW 2
5	6	5	10	7.0	... 0	SE 1	... 0
6	0	8	0	2.7	NE 1	W 3	W 1
7	0	4	0	1.3	SW 2	SW 3	W 1
8	2	1	0	1.0	SW 2	SW 1	W 1
9	1	4	0	1.7	W 1	SW 3	W 1
10	4	10	10	8.0	... 0	SW 4	... 0
11	2	4	0	2.0	SW 2	W 2	W 1
12	0	1	0	0.3	NW 1	W 1	W 2
13	8	5	0	4.3	W 2	W 3	NW 1
14	8	4	0	4.0	NW 2	SW 4	W 2
15	0	10	6	5.3	W 1	SW 2	W 2
16	8	10	10	9.3	SW 3	W 3	N 2
17	10	10	2	7.3	SW 2	SW 2	SW 2
18	10	10	10	10.0	SW 1	SW 1	... 0
19	10	6	6	7.3	... 0	SW 2	SW 2
20	2	6	10	6.0	SW 3	W 3	NW 2
21	3	6	2	3.7	NW 3	SW 4	NW 4
22	10	9	8	9.0	W 2	W 2	W 1
23	10	10	8	9.3	W 2	W 3	SW 1
24	10	10	6	8.7	NW 2	NW 3	NW 2
25	2	1	0	1.0	NW 1	W 2	W 1
26	0	8	0	2.7	SW 1	NW 1	... 0
27	2	2	0	1.3	NW 1	N 2	N 1
28	0	2	10	4.0	N 1	E 2	... 0
29	8	10	10	9.3	... 0	SW 1	... 0
30	6	2	0	2.7	NW 1	N 1	... 0
31	0	2	0	0.7	N 1	S 1	SW 1
	4.1	6.0	4.1	4.7	1.4	2.2	1.1

Mittel 1.6

Zahl der Tage mit:	
Niederschlag mindestens 1,0 mm . . (●) ✕ ▲ △)	8
Niederschlag mehr als 0,2 mm . . " " " "	12
Niederschlag mindestens 0,1 mm . . " " " "	14
Schnee mindestens 0,1 mm (✕)	—
Hagel (▲)	—
Graupeln (△)	—
Tau (D)	17
Reif (L)	—
Glatteis (S)	—
Nebel (≡)	—
Gewitter (nah ☄, fern ☄)	5
Wetterleuchten (<)	—

Niederschlag		Höhe der Schneedecke in cm 7 ^a	Bemerkungen	Tag
Höhe 7 ^a mm	Form und Zeit			
0.6	—	—	—	1
—	—	—	—	2
—	—	—	—	3
—	—	—	—	4
—	⊙ ² 4 ¹⁷ —5 ¹⁵ p, ⊙ ^{tr.} 10 ²⁸ —10 ⁴⁷ , ⊙ ¹ 10 ¹⁷ —11 p	Windst. 8 4 ⁵⁰ —5 ¹⁴ p, [⊙ ² SW—NE		5
19.4	⊙ ^{n.} ⊙ ¹ 10 ⁰³ —10 ¹⁰ a	[⊙ ⁰ SW—NE	[⊙ ¹ SW—NE 10 ²⁸ —11 ¹⁵ p	6
0.6	—	—	9 ⁴⁸ —10 ¹⁵ a	7
—	—	—	—	8
—	—	—	—	9
—	⊙ ^{tr.} einz. zw. 2 + 3 + zw. 8 + 9 p	—	—	10
2.3	⊙ ^{n.}	—	—	11
—	—	—	—	12
—	—	—	—	13
—	—	—	—	14
—	⊙ ⁰ 1 ⁰⁸ —1 ¹⁵ , ⊙ ^{tr.} 2 ¹⁸ —3 ⁰⁸ , ⊙ ¹ 4 ¹³ —4 ⁵³ p	[— [⊙ ¹ SW—NE	12 ⁰² —1 ¹⁴ u. 2 ⁴³ —3 ¹⁴ p	15
2.3	⊙ ^{n.} , ⊙ ⁰ ztw. a + II—2 ⁰⁵ p, ⊙ ⁰ 5 ⁰⁰ —5 ²⁸ + ztw. p	—	[⊙ ⁰ NW—SE	16
1.8	⊙ ⁰ ztw. a	—	4 ⁴⁸ —5 ³⁴ p, mehr.	17
0.9	⊙ ^{n.} , ⊙ ^{tr.} 12 ^{3/4} —1 + ⊙ ⁰ ztw. p	—	(Donner 13 ¹⁴ —2 p	18
4.8	⊙ ^{n.} , ⊙ ⁰ 1—7 ¹⁵ a	—	—	19
0.2	—	—	—	20
1.3	⊙ ^{n.} , ⊙ ⁰ ztw. a, ⊙ ^{tr.} einz. p	—	—	21
0.4	—	—	—	22
—	—	—	—	23
0.1	⊙ ^{n.}	—	—	24
—	—	—	—	25
—	—	—	—	26
—	—	—	—	27
—	⊙ ^{tr.} 4 ^{1/2} —5 p, ⊙ ⁰ v. 5—7 ^{1/2} p + ztw.—III—n	—	—	28
4.2	⊙ ^{n.} , ⊙ ⁰ ztw. a + 1 ^{1/2} —II + ztw. p	—	—	29
3.1	⊙ ^{n.}	—	—	30
—	⊙ ¹ 11 ^{3/4} p—n	[— [⊙ ²	11 ^{1/2} p—1 ^{1/2} a	31
42.0	Monatssumme.	—	—	

Wind-Verteilung.				
	7 a	2 p	9 p	Summe
N	2	2	2	6
NE	1	—	—	1
E	—	1	—	1
SE	—	1	—	1
S	—	1	—	1
SW	10	14	6	30
W	5	9	11	25
NW	8	3	4	15
Still	5	—	8	13

Tag	1.				2.			3.	
	Luftdruck (Barometerstand auf 0 ^o und Normal- schwere reducirt) 700 mm +				Temperatur-Extreme (abgelesen 9p) °C			Luft- °C	
	7a	2p	9p	Tages- mittel	Maxi- mum	Mini- mum	Diffe- renz	7a	2p
1	51.2	52.6	54.6	52.8	22.3	13.8	8.5	15.9	21.3
2	52.7	48.5	46.5	49.2	23.0	11.9	11.1	14.4	21.6
3	44.7	44.1	45.5	44.8	19.3	12.3	7.0	16.4	17.2
4	48.1	51.7	55.3	51.7	13.8	9.0	4.8	10.3	12.3
5	56.8	55.4	54.9	55.7	13.5	4.9	8.6	6.4	12.0
6	56.4	57.3	58.3	57.3	20.6	12.9	7.7	14.3	18.9
7	59.8	59.9	60.4	60.3	23.2	13.9	9.3	14.7	22.6
8	61.1	61.0	61.5	61.2	25.2	12.9	12.3	13.9	24.4
9	61.9	60.8	60.5	61.1	22.8	14.3	8.5	16.0	22.0
10	59.6	58.1	57.9	58.5	21.3	12.0	9.3	13.8	20.8
11	58.7	57.9	57.6	58.1	21.8	12.3	9.5	13.5	21.2
12	58.1	56.8	56.9	57.3	23.4	11.6	11.8	14.5	22.7
13	56.6	55.0	53.9	55.2	23.9	11.9	12.0	12.9	22.2
14	53.8	54.0	54.1	54.0	19.7	13.7	6.0	15.5	17.7
15	56.1	57.7	60.1	58.0	17.4	13.1	4.3	13.9	16.3
16	61.8	61.8	61.4	61.7	17.0	8.6	8.4	9.3	16.0
17	59.8	59.0	60.1	59.6	17.8	8.8	9.0	10.2	16.6
18	61.6	62.6	63.4	62.5	14.0	7.8	6.2	8.7	13.6
19	63.3	61.8	62.0	62.4	20.1	5.6	14.5	6.8	18.5
20	62.0	60.5	60.4	61.0	21.6	7.9	13.7	9.1	19.1
21	59.8	58.1	58.4	58.8	19.6	7.8	11.8	8.5	17.7
22	59.5	60.3	60.8	60.2	16.7	9.5	7.2	10.9	14.8
23	59.8	58.3	57.7	58.6	17.2	4.7	12.5	5.2	16.0
24	56.5	54.0	53.2	54.6	19.4	5.7	13.7	6.8	18.2
25	52.8	51.3	50.5	51.5	20.6	7.8	12.8	8.2	19.2
26	50.2	48.9	48.0	49.0	21.7	9.2	12.5	9.6	19.6
27	48.6	48.1	48.5	48.4	22.8	9.2	13.6	9.7	21.5
28	48.8	46.7	47.7	47.7	23.6	9.9	13.7	10.8	23.2
29	46.9	47.0	49.2	47.7	22.7	13.2	9.5	13.4	22.4
30	49.6	47.6	46.7	48.0	22.4	9.8	12.6	10.6	21.6
Monats- Mittel	55.9	55.2	55.5	55.6	20.3	10.2	10.1	11.5	19.0

PENTADEN-ÜBERSICHT

Pentade	Luftdruck		Lufttemperatur		Bewölkung		Niederschlag
	Summe	Mittel	Summe	Mittel	Summe	Mittel	Summe
3.— 7. Sept.	269.8	54.0	69.2	13.8	40.7	8.1	45.9
8.—12. "	296.2	59.2	87.3	17.5	7.7	1.5	0.1
13.—17. "	288.5	57.7	70.5	14.1	32.4	6.5	3.8
18.—22. "	304.9	61.0	58.9	11.8	15.4	3.1	—
23.—27. "	262.1	52.4	65.7	13.1	4.0	0.8	—
28.— 2. Okt.	236.3	47.3	79.6	15.9	19.0	3.8	21.7

temperatur		Absolute Feuchtigkeit mm				Relative Feuchtigkeit %				Tag
9p	Tages- mittel	7a	2p	9p	Tages- mittel	7a	2p	9p	Tages- mittel	
13.8	16.2	10.7	10.4	9.9	10.3	80	56	85	73.7	1
15.7	16.8	9.3	11.8	12.6	11.2	76	62	94	77.3	2
12.3	14.6	12.9	10.5	9.1	10.8	93	72	87	84.0	3
9.0	10.2	7.2	7.2	7.8	7.4	76	67	92	78.3	4
12.9	11.0	6.6	9.6	10.8	9.0	91	93	98	94.0	5
15.4	16.0	11.9	14.7	12.9	13.2	98	90	99	95.7	6
16.1	17.4	12.3	13.3	13.1	12.9	99	66	96	87.0	7
17.5	18.3	11.5	13.7	13.7	13.0	98	60	92	83.3	8
16.7	17.8	12.4	10.5	10.4	11.1	91	54	73	72.7	9
16.1	16.7	9.6	10.2	9.8	9.9	82	56	72	70.0	10
15.7	16.5	8.7	9.3	9.5	9.2	75	50	72	65.7	11
17.3	18.0	9.3	10.6	10.6	10.2	76	52	72	66.7	12
16.3	16.9	10.3	12.6	11.9	11.6	94	64	86	81.3	13
15.6	16.1	12.0	12.8	12.1	12.3	91	85	92	89.3	14
13.1	14.1	10.0	8.1	8.1	8.7	85	59	73	72.3	15
9.0	10.8	7.6	7.5	7.5	7.5	88	56	88	77.3	16
11.8	12.6	8.4	9.8	9.7	9.3	91	69	95	85.0	17
8.5	9.8	7.6	7.5	7.0	7.4	91	64	86	80.3	18
11.8	12.2	6.8	10.0	9.6	8.8	93	63	94	83.3	19
13.2	13.6	8.1	10.6	9.6	9.4	95	64	86	81.7	20
10.7	11.9	7.8	9.7	8.7	8.7	94	64	92	83.3	21
10.0	11.4	9.0	9.4	7.1	8.5	93	75	79	82.3	22
9.2	9.9	6.1	7.5	7.5	7.0	92	56	88	78.7	23
11.7	12.1	6.8	9.3	9.2	8.4	93	60	91	81.3	24
12.5	13.1	7.7	11.9	10.0	9.9	94	72	94	86.7	25
14.2	14.4	8.4	11.1	10.3	9.9	95	65	86	82.0	26
16.8	16.2	8.4	8.7	8.6	8.6	94	46	61	67.0	27
18.3	17.6	8.9	9.9	9.4	9.4	93	47	60	66.7	28
15.5	16.7	10.7	12.0	11.3	11.3	94	60	86	80.0	29
18.3	17.2	8.9	9.7	10.4	9.7	94	51	66	70.3	30
13.8	14.5	9.2	10.3	9.9	9.8	90.0	63.3	84.5	79.2	

	Maximum	am	Minimum	am	Differenz
Luftdruck	763.4	18.	744.1	3.	19.3
Lufttemperatur	25.2	8.	4.7	23.	20.5
Absolute Feuchtigkeit	14.7	6.	6.1	23.	8.6
Relative Feuchtigkeit	99	6. 7.	46	27.	53
Grösste tägliche Niederschlagshöhe	23.5 am 6.				
Zahl der heiteren Tage (unter 2,0 im Mittel)	13				
" " trüben Tage (über 8,0 im Mittel)	4				
" " Sturmtage (Stärke 8 oder mehr)	—				
" " Eistage (Maximum unter 0°)	—				
" " Frosttage (Minimum unter 0°)	—				
" " Sommertage (Maximum 25,00 oder mehr)	1				

6.

7.

Tag	Bewölkung				Wind			
	ganz wolkenfrei = 0		ganz bewölkt = 10		Richtung und Stärke			
	Windstille = 0		Orkan = 12		7a	2p	9p	
	7a	2p	9p	Tages- mittel	7a	2p	9p	
1	2	8	0	3.3	NW 1	NW 3	N	2
2	8	4	10	7.3	N 2	SE 1	W	2
3	10	10	10	10.0	SW 2	W 2	NW	1
4	10	10	4	8.0	NW 3	N 2	NW	1
5	10	10	10	10.0	NW 1	NW 1	SW	2
6	10	10	4	8.0	SW 1	SW 2	SW	1
7	10	4	0	4.7	SW 1	SW 1	SW	2
8	0	2	0	0.7	SW 1	SW 1	N	1
9	7	3	0	3.3	N 1	N 2	N	2
10	6	5	0	3.7	... 0	NE 4	NE	2
11	0	0	0	0.0	N 1	NE 4	NE	2
12	0	0	0	0.0	NE 2	SE 2	SE	2
13	0	2	0	0.7	SE 1	E 1	E	1
14	10	9	10	9.7	SW 2	SW 1	SW	1
15	10	4	10	8.0	N 3	N 3	N	3
16	6	6	4	5.3	NW 2	NW 2	NE	2
17	10	10	6	8.7	W 2	W 2	N	1
18	8	9	4	7.0	N 2	N 2	NE	1
19	0	2	0	0.7	NE 1	NE 3	NE	1
20	0	0	0	0.0	NE 2	E 2	NE	1
21	0	2	0	0.7	NE 1	N 2	...	0
22	6	9	6	7.0	NE 1	NE 1	NE	1
23	4	0	0	1.3	NE 1	NE 1	SE	2
24	0	0	0	0.0	... 0	SE 2	SE	1
25	0	0	0	0.0	... 0	SE 1	S	1
26	0	4	2	2.0	... 0	... 0	...	0
27	0	2	0	0.7	... 0	NE 3	NE	2
28	0	0	0	0.0	NE 3	E 2	NE	2
29	0	4	0	1.3	E 2	SW 2	NW	1
30	2	2	10	4.7	SE 1	NE 2	NE	1
	4.3	4.4	3.0	3.9	1.3	1.9	1.4	
						Mittel 1.5		

Zahl der Tage mit:	
Niederschlag mindestens 1,0 mm . . (● × ▲ △)	5
Niederschlag mehr als 0,2 mm . . " " " "	7
Niederschlag mindestens 0,1 mm . . " " " "	8
Schnee mindestens 0,1 mm (✱)	—
Hagel (▲)	—
Graupeln (△)	—
Tau (P)	23
Reif (L)	—
Glatteis (S)	—
Nebel (≡)	1
Gewitter (nah ☌, fern T)	2
Wetterleuchten (◁)	—

Niederschlag

Höhe
der
Schnee-
decke
in cm
7a

Bemer-
kungen

Tag

Höhe 7a mm	Form und Zeit	Höhe der Schnee- decke in cm 7a	Bemer- kungen	Tag
5.5	⊙ n	—	—	1
—	⊙ ⁰ 507—513, ⊙ ¹ —525, ⊙ ² 623—643, ⊙ ⁰ —653, ⊙ ^{1·2} 756	—	{ ☐ ¹ SW—NE	2
18.6	⊙ n, ⊙ ¹ 1 ¹ / ₄ —1 ³ / ₄ p, ⊙ ⁰ 8 ¹ / ₄ —III	—	{ 507—6 ³ / ₄ p, ☐ ⁰	3
0.5	⊙ tr. einz. a, ⊙ ⁰ zw. 8—9 p	—	{ 8 ⁰⁴ —8 ¹ / ₂ p	4
0.4	f. Sprüh ⊙ ⁰ zw. a, ⊙ ⁰ 1—2 p, ⊙ ^{0·1} 5—8, ⊙ ¹ v. 8 III—n zw.	—	☐ ≡ ¹ fr.	5
23.5	⊙ n, f. Sprüh ⊙ ⁰ zw. a, ⊙ ⁰ v. II—6 ¹ / ₂ p oft	—	—	6
2.9	—	—	☐ ²	7
0.1	—	—	☐ ²	8
—	—	—	☐	9
—	—	—	☐	10
—	—	—	☐	11
—	—	—	☐	12
—	—	—	☐	13
—	⊙ ⁰ zw. a	—	☐	14
3.8	⊙ n	—	☐	15
—	—	—	☐	16
—	—	—	☐	17
—	—	—	☐	18
—	—	—	☐	19
—	—	—	☐	20
—	—	—	☐	21
—	—	—	☐	22
—	—	—	☐	23
—	—	—	☐	24
—	—	—	☐ ²	25
—	—	—	☐ ²	26
—	—	—	☐	27
—	—	—	☐	28
—	—	—	☐	29
—	⊙ ^{1·2} 9 ²⁸ p—n	☐ ☐ ²	10 ²⁸ p—2 ³ / ₄ a	30
55.3	Monatssumme.	—	—	—

Wind-Verteilung.				
	7a	2p	9p	Summe
N	5	5	5	15
NE	7	7	10	24
E	1	3	1	5
SE	2	4	3	9
S	—	—	1	1
SW	5	5	4	14
W	1	2	1	4
NW	4	3	3	10
Still	5	1	2	8

Tag	1.				2.			3.	
	Luftdruck (Barometerstand auf 0" und Normal- schwere reduziert) 700 mm +				Temperatur-Extreme (abgelesen 9P) °C			Luft-	
	7 a	2 p	9 p	Tages- mittel	Maxi- mum	Mini- mum	Diffe- renz	7 a	2 p
1	45.0	45.6	46.7	45.8	19.1	14.3	4.8	14.7	16.4
2	45.5	47.5	48.2	47.1	17.6	11.6	6.0	12.6	17.1
3	46.4	41.1	42.7	43.4	15.6	8.1	7.5	9.3	15.1
4	47.3	48.9	51.9	49.4	15.3	9.1	6.2	10.2	14.9
5	54.5	53.5	54.3	54.1	14.1	5.6	8.5	6.3	13.9
6	53.2	51.1	49.7	51.3	15.6	9.6	6.0	10.5	15.5
7	45.3	43.1	44.0	44.1	14.6	7.1	7.5	9.7	13.0
8	44.3	44.3	46.3	45.0	15.1	11.6	3.5	12.1	14.9
9	47.2	44.3	47.0	46.2	18.5	12.3	6.2	12.6	18.3
10	50.9	53.9	55.8	53.5	16.4	11.2	5.2	12.4	15.3
11	57.2	57.0	57.3	57.2	15.7	6.9	8.8	7.7	14.9
12	57.6	57.2	56.2	57.0	17.7	9.9	7.8	10.4	17.3
13	52.4	48.8	48.6	49.9	18.3	8.3	10.0	9.1	18.0
14	46.1	43.9	42.5	44.2	15.3	9.9	5.4	10.5	14.3
15	41.7	38.1	44.4	41.4	18.6	10.9	7.7	11.4	18.1
16	44.5	40.4	35.9	40.3	14.3	7.6	6.7	8.2	13.4
17	38.1	41.4	43.9	41.1	14.7	8.3	6.4	11.3	13.3
18	46.0	47.0	48.5	47.2	14.2	5.4	8.8	5.7	14.1
19	51.5	52.9	53.3	52.6	13.6	8.5	5.1	9.5	13.4
20	53.5	54.1	55.4	54.3	15.9	7.6	8.3	8.3	15.3
21	55.7	54.8	54.4	55.0	14.9	7.8	7.1	8.1	14.6
22	54.3	53.8	54.0	54.0	15.3	8.0	7.3	8.0	14.7
23	52.7	50.8	51.0	51.5	16.8	8.0	8.8	8.2	16.3
24	50.2	50.1	51.5	50.6	11.4	10.3	1.1	10.5	11.0
25	52.3	51.8	51.3	51.8	11.4	5.9	5.5	6.1	11.0
26	46.8	44.1	44.6	45.2	10.4	7.0	3.4	9.2	10.2
27	46.4	47.3	48.3	47.3	10.6	8.5	2.1	9.1	10.4
28	47.4	45.3	44.2	45.6	11.0	7.0	4.0	7.3	10.8
29	42.3	40.5	39.4	40.7	12.4	7.8	4.6	8.5	12.0
30	38.3	39.4	43.2	40.3	12.1	6.4	5.7	7.0	11.8
31	48.3	50.0	51.9	50.1	13.2	8.9	4.3	9.3	12.7
Monats- Mittel	48.5	47.8	48.6	48.3	14.8	8.7	6.1	9.5	14.3

PENTADEN - ÜBERSICHT

Pentade	Luftdruck		Lufttemperatur		Bewölkung		Niederschlag
	Summe	Mittel	Summe	Mittel	Summe	Mittel	Summe
3.— 7. Okt.	242.3	48.5	57.4	11.5	41.4	8.3	8.0
8.—12. "	258.9	51.8	65.0	13.0	37.7	7.5	10.4
13.—17. "	216.9	43.4	61.1	12.2	40.1	8.0	6.5
18.—22. "	263.1	52.6	53.3	10.7	31.7	6.3	1.3
23.—27. "	246.4	49.3	49.1	9.8	46.7	9.3	6.1
28.— 1. Nov.	230.8	46.2	45.5	9.1	45.7	9.1	3.1

temperatur		Absolute Feuchtigkeit mm				Relative Feuchtigkeit %				Tag
9 p	Tages- mittel	7 a	2 p	9 p	Tages- mittel	7 a	2 p	9 p	Tages- mittel	
14.3	14.9	11.9	11.7	11.0	11.5	96	84	92	90.7	1
11.6	13.2	10.3	8.0	8.8	9.0	96	55	87	79.3	2
13.2	12.7	8.3	9.5	8.5	8.8	95	74	75	81.3	3
9.1	10.8	8.1	8.8	7.9	8.3	87	70	92	83.0	4
11.2	10.6	6.9	9.6	9.6	8.7	98	81	97	92.0	5
9.6	11.3	9.2	9.8	8.3	9.1	98	75	94	89.0	6
12.7	12.0	8.4	10.8	10.5	9.9	94	97	97	96.0	7
13.0	13.2	10.0	11.6	10.9	10.8	96	92	98	95.3	8
14.8	15.1	10.5	11.3	10.6	10.8	97	72	85	84.7	9
11.2	12.5	10.1	10.4	9.4	10.0	95	81	95	90.3	10
11.0	11.2	7.7	9.9	8.2	8.6	99	78	83	86.7	11
12.1	13.0	8.9	11.4	10.1	10.1	95	78	97	90.0	12
13.8	13.7	8.3	11.4	11.2	10.3	96	75	96	89.0	13
12.6	12.5	9.1	11.6	10.3	10.3	96	96	96	96.0	14
10.9	12.8	9.8	10.4	8.5	9.6	98	67	89	84.7	15
12.9	11.8	7.1	8.5	8.6	8.1	88	75	78	80.3	16
8.3	10.3	8.9	8.0	7.5	8.1	89	71	92	84.0	17
9.4	9.6	6.3	7.7	7.7	7.2	93	64	88	81.7	18
8.5	10.0	7.8	9.4	7.7	8.3	88	82	93	87.7	19
10.3	11.0	7.7	9.9	8.7	8.8	94	77	94	88.3	20
11.7	11.5	7.7	10.2	9.6	9.2	96	83	95	91.3	21
11.0	11.2	7.8	10.4	9.3	9.2	98	84	95	92.3	22
11.0	11.6	8.0	10.8	9.0	9.3	99	78	92	89.7	23
11.1	10.9	8.9	8.9	8.1	8.6	94	91	82	89.0	24
7.3	7.9	6.5	7.4	6.9	6.9	93	75	90	86.0	25
9.5	9.6	7.5	8.3	7.9	7.9	88	90	89	89.0	26
8.5	9.1	8.1	7.7	7.6	7.8	93	82	92	89.0	27
8.9	9.0	7.0	7.4	7.5	7.3	91	76	88	85.0	28
8.4	9.3	7.6	7.7	7.3	7.5	92	74	89	85.0	29
9.8	9.6	6.9	8.3	8.7	8.0	92	81	96	89.7	30
10.3	10.6	8.3	9.1	8.9	8.8	95	85	95	91.7	31
10.9	11.4	8.4	9.5	8.9	8.9	94.2	78.8	90.0	88.0	

	Maximum	am	Minimum	am	Differenz
Luftdruck	757.6	12.	735.9	16.	21.7
Lufttemperatur	19.1	1.	5.4	18.	13.7
Absolute Feuchtigkeit	11.9	1.	6.3	18.	5.6
Relative Feuchtigkeit	99	11. 23.	55	2.	44

Grösste tägliche Niederschlagshöhe	13.2 am I.
Zahl der heiteren Tage (unter 2,0 im Mittel)	—
„ „ trüben Tage (über 8,0 im Mittel)	16
„ „ Sturmtage (Stärke 8 oder mehr)	—
„ „ Eistage (Maximum unter 0°)	—
„ „ Frosttage (Minimum unter 0°)	—
„ „ Sommertage (Maximum 25,0° oder mehr)	—

6.

7.

Tag	Bewölkung				Wind						
	ganz wolkenfrei = 0		ganz bewölkt = 10		Richtung und Stärke						
	Windstille = 0		Orkan = 12		7 a	2 p	9 p	Tagesmittel	7 a	2 p	9 p
1	10	6	6	7.3	...	0	SW	2	SW	1	1
2	10	4	3	5.7	SW	2	S	2	S	1	1
3	10	10	10	10.0	SW	1	NW	3	S	2	2
4	10	4	0	4.7	SW	1	SW	2	NE	2	2
5	10	10	10	10.0	SW	1	SW	1	SW	1	1
6	10	6	4	6.7	SW	1	SW	2	SW	2	2
7	10	10	10	10.0	SW	1	SW	1	SW	1	1
8	10	10	10	10.0	SW	1	SW	2	SW	1	1
9	3	10	10	7.7	SW	2	NE	2	NE	2	2
10	10	10	10	10.0	...	0	SW	2	SW	1	1
11	10	4	0	4.7	SW	1	SW	1	SW	1	1
12	8	4	4	5.3	SW	1	SW	1	SW	1	1
13	4	2	10	5.3	...	0	SW	1	SW	1	1
14	6	10	10	8.7	...	0	...	0	SW	1	1
15	10	4	9	7.7	SW	1	...	0	SW	2	2
16	10	10	9	9.7	E	3	NE	2	NE	1	1
17	10	6	10	8.7	W	1	SW	2	NE	2	2
18	7	2	8	5.7	E	2	SE	2	N	1	1
19	10	10	4	8.0	NE	1	SE	1	NE	1	1
20	2	0	4	2.0	SE	1	SE	2	E	1	1
21	10	10	10	10.0	SE	2	...	0	...	0	0
22	10	4	4	6.0	...	0	SE	1	SE	1	1
23	9	9	8	8.7	E	1	E	1	E	1	1
24	10	10	10	10.0	NE	2	SE	2	NW	2	2
25	6	8	10	8.0	SE	1	S	1	E	1	1
26	10	10	10	10.0	N	2	N	1	NW	2	2
27	10	10	10	10.0	SW	2	W	2	SW	1	1
28	10	6	8	8.0	NE	1	SW	1	N	1	1
29	10	10	10	10.0	NE	1	E	2	NE	1	1
30	9	10	10	9.7	NE	1	NE	1	...	0	0
31	9	9	10	9.3	W	1	W	1	NW	1	1
	8.8	7.4	7.8	8.0	1.1			1.4			1.2
								Mittel			

Zahl der Tage mit:	
Niederschlag mindestens 1,0 mm . . . (● ✕ ▲ △)	12
Niederschlag mehr als 0,2 mm . . . " " " "	16
Niederschlag mindestens 0,1 mm . . . " " " "	18
Schnee mindestens 0,1 mm (✕)	—
Hagel (▲)	—
Graupeln (△)	—
Tau (p)	12
Reif (l)	—
Glatteis (2)	—
Nebel (≡)	3
Gewitter (nah ☒, fern ☒)	1
Wetterleuchten (<)	—

Niederschlag		Höhe der Schneedecke in cm 7 a	Bemerkungen	Tag
Höhe 7a mm	Form und Zeit			
13.2	☉ n, ☉ ^{1·2} 8 ¹ / ₂ —12 a, ☉ tr. ztw. p	☐ ¹	S—N 10 ¹³ —12 a	1
11.5	☉ n, ☉ ⁰ 1 ¹ / ₂ 7—8 p	—	—	2
0.6	☉ ⁰ v. 3 ¹ / ₄ —7 p ztw.	—	—	3
2.8	—	—	—	4
—	☉ ⁰ 3 ¹ / ₄ 8 p—III—n	☐	≡ ⁰ fr.—8 ¹ / ₄ a	5
4.3	☉ n	—	—	6
0.3	☉ n, ☉ ⁰ a ztw.—II + ztw. p—n	—	—	7
4.7	☉ n, ☉ ⁰ a fast ohne Unterbr.—1 p, ☉ tr. ztw. p	—	—	8
5.7	—	—	—	9
—	—	—	☐	10
—	—	—	☐ ≡ ⁰ fr.	11
—	—	—	☐	12
—	☉ tr. v. 6—8 p ztw.	—	☐	13
0.1	☉ ⁰ ztw. a—II + p	—	—	14
1.3	☉ n, ☉ ¹ 4 ³ / ₄ —7 ³ / ₄ p	—	—	15
5.1	—	—	—	16
—	☉ ⁰ v. 7 ¹ / ₂ —11 a	—	—	17
1.2	—	—	☐	18
—	☉ tr. ztw. a	—	☐	19
0.1	—	—	☐	20
—	—	—	☐	21
—	—	☐	≡ ¹ fr.—10 ¹ / ₂ a	22
—	—	—	☐	23
—	☉ ⁰ ztw. 3—5 p	—	☐	24
0.3	—	—	—	25
1.6	☉ n, ☉ ⁰ ztw. a—8 p	—	—	26
4.2	☉ n, ☉ tr. einz. a	—	—	27
0.0	—	—	—	28
—	☉ tr. zw. 3 ¹ / ₄ + 4 p	—	—	29
0.5	☉ n, ☉ ⁰ ztw. a + p	—	—	30
1.0	☉ ⁰ ztw. a + p	—	—	31
58.5	Monatssumme.			

Wind-Verteilung.				
	7a	2p	9p	Summe
N	1	1	2	4
NE	5	3	6	14
E	3	2	3	8
SE	3	5	1	9
S	—	2	2	4
SW	12	12	12	36
W	2	2	—	4
NW	—	1	3	4
Still	5	3	2	10

1.

2.

3.

Tag	Luftdruck (Barometerstand auf 0 ^o und Normal- schwere reducirt) 700 mm +				Temperatur-Extreme (abgelesen 9p) °C			Luft- °C	
	7a	2p	9p	Tages- mittel	Maxi- mum	Mini- mum	Diffe- renz	7a	2p
	1	54.1	54.1	54.1	54.1	10.4	5.9	4.5	6.1
2	53.2	51.1	49.3	51.2	12.6	5.3	7.3	7.6	12.6
3	48.8	48.1	50.2	49.0	12.4	6.4	6.0	6.7	12.3
4	50.6	50.8	52.5	51.3	11.5	5.3	6.2	5.5	11.4
5	54.3	54.4	55.4	54.7	7.6	1.8	5.8	2.4	7.3
6	56.3	56.1	55.9	56.1	4.4	-0.7	5.1	0.7	4.3
7	56.6	56.1	55.9	56.2	2.9	- 3.0	5.9	-1.9	2.7
8	55.2	54.3	53.7	54.4	2.0	-0.1	2.1	0.3	1.7
9	52.4	50.5	51.4	51.4	6.1	-0.5	6.6	0.5	5.9
10	52.9	52.7	54.1	53.2	6.8	0.7	6.1	0.9	6.7
11	53.5	52.2	50.5	52.1	5.9	1.1	4.8	2.3	5.7
12	45.4	45.1	47.7	46.1	7.7	3.2	4.5	4.0	7.2
13	48.5	45.2	47.8	47.2	9.4	6.5	2.9	6.9	9.3
14	51.1	54.7	57.4	54.4	9.0	6.2	2.8	7.0	8.9
15	58.8	59.0	59.3	59.0	8.3	3.0	5.3	3.9	6.8
16	58.7	58.4	59.1	58.7	8.5	6.3	2.2	6.7	8.4
17	58.9	58.5	59.0	58.8	8.1	6.8	1.3	7.0	7.8
18	60.1	60.5	61.9	60.8	6.8	3.3	3.5	4.1	6.0
19	61.6	60.4	59.9	60.6	3.6	2.2	1.4	2.5	3.4
20	58.8	58.4	59.6	58.9	5.1	2.6	2.5	3.1	4.9
21	60.7	61.5	62.3	61.5	3.3	-0.9	4.2	1.0	1.4
22	59.9	58.1	57.3	58.4	1.9	-1.8	3.7	-0.4	1.7
23	53.9	51.5	49.6	51.7	1.4	-1.1	2.5	-0.8	1.3
24	48.4	50.5	51.0	50.0	5.3	-0.7	6.0	-0.2	5.1
25	50.4	46.9	44.1	47.1	5.4	1.1	4.3	1.6	5.2
26	42.2	41.6	42.8	42.2	10.3	4.4	5.9	5.7	7.2
27	45.2	47.3	50.1	47.5	12.8	7.7	5.1	8.3	12.5
28	51.4	51.1	52.7	51.7	11.1	6.3	4.8	6.5	11.0
29	55.3	56.2	57.8	56.4	9.7	6.8	2.9	7.4	9.7
30	60.2	61.3	63.1	61.5	9.0	3.4	5.6	6.8	7.3
Monats- Mittel	53.9	53.6	54.2	53.9	7.3	2.9	4.4	3.7	6.8

PENTADEN - ÜBERSICHT

Pentade	Luftdruck		Lufttemperatur		Bewölkung		Niederschlag
	Summe	Mittel	Summe	Mittel	Summe	Mittel	Summe
2.— 6. Nov.	262.3	52.5	31.1	6.2	7.6	1.5	—
7.—11. "	267.3	53.5	12.4	2.5	44.0	8.8	0.0
12.—16. "	265.4	53.1	35.3	7.1	48.4	9.7	30.7
17.—21. "	300.6	60.1	18.2	3.6	43.0	8.6	1.9
22.—26. "	249.4	49.9	15.2	3.0	44.6	8.9	13.9
27.— 1. Dez.	275.8	55.2	32.8	6.6	30.4	6.1	12.2

4.

5.

temperatur		Absolute Feuchtigkeit mm				Relative Feuchtigkeit %				Tag
9p	Tages- mittel	7a	2p	9p	Tages- mittel	7a	2p	9p	Tages- mittel	
6.2	7.0	6.8	8.0	6.7	7.2	97	89	94	93.3	1
8.6	9.4	6.9	7.5	6.3	6.9	89	69	76	78.0	2
8.4	9.0	5.3	6.0	5.9	5.7	73	56	71	66.7	3
7.1	7.8	6.1	5.6	4.5	5.4	91	56	59	68.7	4
1.8	3.3	4.3	4.5	4.6	4.5	79	60	88	75.7	5
0.6	1.6	4.1	5.2	4.4	4.6	85	84	92	87.0	6
1.2	0.8	3.9	4.8	4.6	4.4	98	85	92	91.7	7
0.6	0.8	4.5	4.7	4.7	4.6	96	91	98	95.0	8
2.4	2.8	4.6	5.3	4.9	4.9	96	77	89	87.3	9
4.3	4.0	4.6	6.1	5.9	5.5	94	83	96	91.0	10
4.0	4.0	5.2	6.5	6.1	5.9	96	96	100	97.3	11
7.4	6.5	6.0	7.3	6.9	6.7	98	96	90	94.7	12
6.7	7.4	6.7	6.0	6.3	6.3	90	69	86	81.7	13
8.3	8.1	5.9	7.0	6.9	6.6	78	83	86	82.3	14
6.3	5.8	5.6	6.8	6.9	6.4	92	93	98	94.3	15
7.4	7.5	7.1	7.5	7.1	7.2	98	92	93	94.3	16
6.8	7.1	6.7	6.8	6.2	6.6	89	86	84	86.3	17
3.3	4.2	5.5	5.7	5.1	5.4	90	82	88	86.7	18
3.3	3.1	4.7	4.9	5.0	4.9	85	83	87	85.0	19
3.3	3.6	5.0	5.3	4.7	5.0	88	81	82	83.7	20
-0.9	0.2	3.8	3.6	3.1	3.5	77	71	73	73.7	21
0.3	0.5	3.5	3.8	3.7	3.7	79	73	78	76.7	22
-0.2	0.0	3.4	3.7	3.9	3.7	79	73	87	79.7	23
2.3	2.4	4.0	4.3	4.8	4.4	89	66	87	80.7	24
4.4	3.9	4.5	5.0	5.8	5.1	87	75	93	85.0	25
10.3	8.4	6.6	7.3	8.1	7.3	98	96	88	94.0	26
7.7	9.0	7.5	7.9	7.1	7.5	92	73	90	85.0	27
7.1	7.9	6.8	8.0	7.0	7.3	94	81	93	89.3	28
8.2	8.4	7.5	8.1	7.3	7.6	98	91	91	93.3	29
4.3	5.7	5.6	4.8	4.9	5.1	76	64	79	73.0	30
4.7	5.0	5.4	5.9	5.6	5.7	89.0	79.1	86.9	85.0	

	Maximum	am	Minimum	am	Differenz
Luftdruck	763.1	30.	741.6	26.	21.5
Lufttemperatur	12.8	27.	-3.0	7.	15.8
Absolute Feuchtigkeit	8.1	26. 29.	3.1	21.	5.0
Relative Feuchtigkeit	100	11.	56	3. 4.	44
Grösste tägliche Niederschlagshöhe	17.2 am 14.				
Zahl der heiteren Tage (unter 2.0 im Mittel)	4				
" " trüben Tage (über 8.0 im Mittel)	18				
" " Sturmtage (Stärke 8 oder mehr)	—				
" " Eistage (Maximum unter 0 ^o)	—				
" " Frosttage (Minimum unter 0 ^o)	8				
" " Sommertage (Maximum 25.0 ^o oder mehr)	—				

6.

7.

Tag	Bewölkung				Wind					
	ganz wolkenfrei = 0		ganz bewölkt = 10		Richtung und Stärke					
	Windstille = 0		Orkan = 12		7a		2p		9p	
	7a	2p	9p	Tages- mittel	7a	2p	9p			
1	10	10	6	8.7	W 1	E 1	NW 1			
2	2	2	0	1.3	NE 2	NE 2	NE 3			
3	1	0	0	0.3	NE 2	NE 3	NE 3			
4	0	0	0	0.0	NE 3	NE 3	NE 2			
5	0	0	0	0.0	NE 2	S 1	E 2			
6	7	7	4	6.0	E 2	SW 1	SW 1			
7	10	10	10	10.0	E 2	SE 3	N 2			
8	10	10	10	10.0	NE 1	NE 2	NE 1			
9	10	7	0	5.7	NE 1	NE 1	SE 1			
10	9	9	10	9.3	SE 1	SE 1	...	0		
11	9	8	10	9.0	...	0	N 1			
12	10	10	10	10.0	N 1	E 1	NW 1			
13	9	8	10	9.0	S 1	SW 3	SW 3			
14	10	9	10	9.7	W 3	W 2	NW 1			
15	9	10	10	9.7	W 1	W 1	NE 1			
16	10	10	10	10.0	NE 1	NE 2	NE 1			
17	10	10	10	10.0	NW 1	NW 1	NE 1			
18	7	7	10	8.0	NE 2	SE 1	SE 2			
19	10	10	10	10.0	NE 2	NE 2	NE 2			
20	10	9	9	9.3	NE 2	NE 2	NE 2			
21	10	7	0	5.7	E 2	E 2	NE 2			
22	7	8	10	8.3	NE 2	NE 3	NE 4			
23	7	8	10	8.3	E 2	E 3	E 2			
24	10	6	8	8.0	SW 2	SW 4	SE 2			
25	10	10	10	10.0	S 2	SE 2	S 1			
26	10	10	10	10.0	SE 1	SE 2	SW 5			
27	8	9	10	9.0	SW 2	SW 1	SE 1			
28	8	6	0	4.7	SE 1	NE 2	N 1			
29	10	10	4	8.0	...	0	NW 2			
30	6	6	6	6.0	NW 2	N 2	NE 3			
	8.0	7.5	6.9	7.5	1.6	1.8	1.8			
						Mittel 1.7				

Zahl der Tage mit:	
Niederschlag mindestens 1,0 mm . . . (● × ▲ △)	9
Niederschlag mehr als 0,2 mm . . . " " " "	11
Niederschlag mindestens 0,1 mm . . . " " " "	12
Schnee mindestens 0,1 mm . . . " " " " (✱)	1
Hagel (▲)	—
Graupeln (△)	—
Tau (p)	3
Reif (l)	2
Glatteis (S)	—
Nebel (≡)	6
Gewitter (nah ☒, fern ☐)	—
Wetterleuchten (◁)	—

Niederschlag

Höhe 7a mm	Form und Zeit	Höhe der Schnee- decke in cm 7a	Bemer- kungen	Tage
1.6	—	—	p ≡ 8 ¹ / ₄ —10 a	1
—	—	—	p	2
—	—	—	—	3
—	—	—	p	4
—	—	—	—	5
—	—	—	⌋ ¹	6
—	—	≡ ¹ n, — ¹ ,	≡ ⁰ I—8 ¹ / ₂ a	7
—	—	≡ ⁰ 7 ¹ / ₂ —10 a, ≡ ⁰ 6 ¹ / ₂ —8 p,	≡ ¹ 8 p—n	8
—	—	—	≡ ⁰ fr.—9 ¹ / ₂ a	9
—	⊙ tr. 7 ³ / ₄ —7 ⁵⁵ a	—	—	10
0.0	—	≡ ⁰ I—3 p, ≡ ² 3—7 p, ≡ ⁰ 7—8 p,	≡ ¹ 8—III—n	11
—	⊙ ⁰ 8 ¹ / ₂ a—II + fast ohne Unterbrech.—8 ¹ / ₄ p	—	≡ ¹ I—10 a	12
6.6	⊙ n, ⊙ ⁰ ztw. a, ⊙ ⁰ von 2 ³ / ₄ oft p, ⊙ ¹ 8—III—9 ¹ / ₂ p	—	—	13
17.2	⊙ n, ⊙ ⁰ oft a + ztw. p	—	—	14
2.7	⊙ ⁰ 1 ¹ / ₄ p—II + ztw. p—III + später	—	—	15
4.2	⊙ n, ⊙ ⁰ ztw. a	—	—	16
1.8	⊙ n, ⊙ tr. ztw. 2 ¹ / ₄ —4 ¹ / ₂ p	—	—	17
0.1	—	—	—	18
—	—	—	—	19
—	—	—	—	20
—	—	—	—	21
—	—	—	—	22
—	—	—	—	23
1.7*	* n	3	—	24
—	⊙ ⁰ von 3 p—III ununterbr.	—	—	25
12.2	⊙ n, ⊙ ⁰ · ¹ I ununterbr.—II + ⊙ ⁰ 4 ¹ / ₄ p	—	—	26
11.2	—	—	—	27
—	—	—	—	28
0.5	⊙ n, ⊙ ⁰ ztw. a	—	—	29
0.5	—	—	—	30
60.3	Monatssumme.	3	—	

Wind-Verteilung.				
	7a	2p	9p	Summe
N	1	1	3	5
NE	11	10	12	33
E	4	4	2	10
SE	3	5	4	12
S	2	1	1	4
SW	2	4	3	9
W	3	2	—	5
NW	2	1	4	7
Still	2	2	1	5

1.

2.

3.

Tag	Luftdruck (Barometerstand auf 0° und Normal- schwere reduziert) 700 mm +				Temperatur-Extreme (abgelesen 9p) °C			Luft- °C	
	7 a	2 p	9 p	Tages- mittel	Maxi- mum	Mini- mum	Diffe- renz	7 a	2 p
1	61.1	58.6	56.4	58.7	4.8	0.6	4.2	0.7	3.4
2	54.2	52.7	51.4	52.8	2.0	0.5	1.5	0.8	1.0
3	46.1	42.1	41.0	43.1	7.0	1.8	5.2	3.7	6.5
4	46.5	47.3	46.1	46.6	6.6	2.1	4.5	2.7	4.4
5	40.5	36.6	40.1	39.1	5.1	0.4	4.7	2.2	4.5
6	44.4	44.3	46.1	44.9	6.7	1.6	5.1	2.9	6.5
7	49.9	50.7	50.2	50.3	4.0	0.9	3.1	1.6	3.1
8	41.8	37.5	35.5	38.3	7.4	2.8	4.6	3.1	5.1
9	40.9	44.3	46.6	43.9	10.6	7.1	3.5	9.1	9.9
10	44.9	43.3	45.7	44.6	9.1	4.4	4.7	6.9	9.1
11	48.1	47.7	48.0	47.9	8.3	3.9	4.4	4.9	7.8
12	47.2	43.3	41.1	43.9	7.2	4.7	2.5	5.0	7.2
13	40.6	41.2	39.5	40.4	6.9	3.3	3.6	5.6	6.5
14	24.9	26.1	24.2	25.1	5.4	3.0	2.4	3.9	4.6
15	37.8	45.4	52.5	45.2	4.9	3.6	1.3	4.3	3.8
16	60.1	62.7	64.9	62.6	4.2	1.1	3.1	2.7	3.7
17	65.3	64.8	65.5	65.2	1.8	-1.6	3.4	-0.9	1.7
18	63.8	61.1	58.9	61.3	-0.3	-3.1	2.8	-2.0	-0.5
19	55.9	54.8	54.4	55.0	7.5	-0.9	8.4	3.9	6.9
20	54.8	54.8	55.6	55.1	8.7	5.6	3.1	5.8	8.6
21	54.1	52.4	51.9	52.8	7.3	3.1	4.2	3.7	5.4
22	55.5	57.4	58.6	57.2	8.0	3.1	4.9	5.7	7.9
23	58.9	59.3	59.7	59.3	6.6	3.1	3.5	5.1	6.5
24	59.2	60.8	61.4	60.5	7.4	1.5	5.9	4.9	7.2
25	59.3	57.1	55.4	57.3	3.1	-2.3	5.4	-1.6	2.6
26	53.4	51.2	49.1	51.2	2.4	0.6	1.8	1.0	1.2
27	47.2	45.6	45.1	46.0	0.6	-1.8	2.4	-1.4	-0.1
28	43.0	42.5	44.0	43.2	-0.7	-3.3	2.6	-2.7	-0.9
29	46.6	48.9	51.4	49.0	-0.5	-2.5	2.0	-2.3	-0.9
30	52.9	53.4	53.2	53.2	-1.5	-3.4	1.9	-3.3	-1.8
31	51.2	49.6	50.2	50.3	0.2	-4.4	4.6	-2.7	-0.1
Monats- Mittel	50.0	49.6	49.8	49.8	4.9	1.2	3.7	2.4	4.2

PENTADEN - ÜBERSICHT

Pentade	Luftdruck		Lufttemperatur		Bewölkung		Niederschlag
	Summe	Mittel	Summe	Mittel	Summe	Mittel	Summe
2.— 6. Dez.	226.5	45.3	18.2	3.6	45.3	9.1	14.7
7.—11. "	225.0	45.0	30.5	6.1	42.0	8.4	28.2
12.—16. "	217.2	43.4	21.9	4.4	42.4	8.5	22.4
17.—21. "	289.4	57.9	16.7	3.3	40.6	8.1	0.3
22.—26. "	285.5	57.1	16.2	3.2	41.6	8.3	5.4
27.—31. "	241.7	48.3	-8.8	-1.8	44.0	8.8	11.2

temperatur		Absolute Feuchtigkeit mm				Relative Feuchtigkeit %				Tag
9 p	Tages- mittel	7 a	2 p	9 p	Tages- mittel	7 a	2 p	9 p	Tages- mittel	
1.5	1.8	3.6	3.7	2.9	3.4	73	63	57	64.3	1
1.9	1.4	3.8	4.5	4.8	4.4	78	90	91	86.3	2
6.6	5.8	5.9	6.7	6.7	6.4	98	93	93	94.7	3
2.9	3.2	5.1	5.2	5.1	5.1	91	84	90	88.3	4
5.1	4.2	4.2	5.9	6.0	5.4	79	94	92	88.3	5
2.5	3.6	5.3	5.5	5.2	5.3	94	77	94	88.3	6
3.4	2.9	4.8	5.0	5.3	5.0	93	88	92	91.0	7
7.1	5.6	5.4	6.4	7.4	6.4	95	97	99	97.0	8
7.7	8.6	6.3	6.2	5.7	6.1	73	68	72	71.0	9
6.4	7.2	6.5	6.0	5.8	6.1	87	70	81	79.3	10
6.1	6.2	5.8	6.7	6.6	6.4	90	85	95	90.0	11
6.1	6.1	6.2	6.2	6.0	6.1	95	82	86	87.7	12
4.1	5.1	5.8	5.5	5.0	5.4	85	77	82	81.3	13
4.5	4.4	5.4	5.2	5.8	5.5	88	82	92	87.3	14
4.2	4.1	5.3	5.2	4.9	5.1	85	87	79	83.7	15
1.1	2.2	4.5	3.7	3.9	4.0	80	62	79	73.7	16
-1.6	-0.6	3.6	4.0	3.5	3.7	84	77	86	82.3	17
-0.9	1.1	5.5	3.8	3.9	3.7	90	86	90	88.7	18
6.8	6.1	5.5	6.7	6.8	6.3	90	90	93	91.0	19
5.7	6.4	6.5	6.6	6.3	6.5	94	79	93	88.7	20
7.3	5.9	5.7	6.0	7.0	6.2	95	89	91	91.7	21
3.1	5.0	6.2	6.2	5.2	5.9	91	78	91	86.7	22
5.0	5.4	6.4	6.6	6.4	6.5	97	91	98	95.3	23
1.5	3.8	6.3	5.1	4.7	5.4	98	68	93	86.3	24
2.0	1.2	3.7	4.5	4.0	4.1	92	80	75	82.3	25
0.6	0.8	3.6	3.6	4.1	3.8	72	70	85	75.7	26
-1.8	-1.3	3.6	4.0	3.6	3.7	88	87	90	88.3	27
-0.5	-1.2	3.3	3.6	3.7	3.5	89	82	83	84.7	28
-2.5	-2.0	3.5	3.5	3.2	3.4	92	80	85	85.7	29
-2.1	-2.3	2.9	3.1	3.4	3.1	82	78	85	81.7	30
-2.6	-2.0	3.2	3.4	2.8	3.1	85	74	74	77.7	31
2.9	3.1	4.9	5.1	5.0	5.0	87.8	80.9	86.6	85.1	

	Maximum	am	Minimum	am	Differenz
Luftdruck	765.5	17.	724.2	14.	41.3
Lufttemperatur	10.6	9.	-4.4	31.	15.0
Absolute Feuchtigkeit	7.4	8.	2.8	31.	4.6
Relative Feuchtigkeit	99	8.	57	1.	42
Grösste tägliche Niederschlagshöhe	20.4 am 9.				
Zahl der heiteren Tage (unter 2,0 im Mittel)	—				
„ „ trübten Tage (über 8,0 im Mittel)	21				
„ „ Sturmtage (Stärke 8 oder mehr)	—				
„ „ Eistage (Maximum unter 0°)	4				
„ „ Frosttage (Minimum unter 0°)	9				
„ „ Sommertage (Maximum 25,0° oder mehr)	—				

6.

7.

Tag	Bewölkung				Wind			
	ganz wolkenfrei = 0		ganz bewölkt = 10		Richtung und Stärke		Windstille = 0 Orkan = 12	
	7 a	2 p	9 p	Tages- mittel	7 a	2 p	9 p	
1	4	4	0	2.7	NE 3	E 3	NE 3	
2	10	10	10	10.0	NE 1	NE 2	NE 2	
3	10	7	10	9.0	NE 1	N 1	SW 3	
4	7	10	7	8.0	SW 2	S 1	S 1	
5	10	10	10	10.0	E 1	E 1	W 3	
6	10	7	8	8.3	NW 1	W 1	NW 2	
7	10	10	10	10.0	SW 1	SW 1	SW 2	
8	10	10	10	10.0	E 2	E 1	...	
9	8	8	4	6.7	W 3	SW 3	W 3	
10	10	4	4	6.0	SE 2	SW 3	SW 3	
11	8	10	10	9.3	SW 1	SW 2	W 1	
12	10	9	10	9.7	E 1	NE 3	NW 1	
13	10	8	8	8.7	SW 3	SW 3	SW 2	
14	9	8	10	9.0	SW 3	SW 3	NW 2	
15	10	10	7	9.0	NW 2	NW 2	NW 3	
16	9	9	0	6.0	N 2	N 2	NE 1	
17	4	4	2	3.3	NE 1	NE 2	NE 1	
18	10	8	10	9.3	SE 2	SE 2	SE 1	
19	10	10	10	10.0	SW 2	S 1	SW 1	
20	10	9	8	9.0	SW 1	SW 1	SW 1	
21	10	10	7	9.0	N 1	NE 1	SW 2	
22	10	9	8	9.0	SW 2	SW 2	SW 2	
23	10	10	10	10.0	SW 1	SW 1	...	
24	10	6	0	5.3	NW 1	NW 1	NE 2	
25	4	8	10	7.3	N 2	NE 2	NE 2	
26	10	10	10	10.0	NE 2	NE 3	E 3	
27	7	7	10	8.0	NE 3	NE 3	NE 4	
28	10	10	10	10.0	NE 2	NE 3	NE 2	
29	10	10	10	10.0	N 1	NE 1	NE 2	
30	10	10	10	10.0	NE 1	NE 1	NE 1	
31	10	8	0	6.0	NE 2	NE 3	NE 3	
	9.0	8.5	7.5	8.3	1.7	1.9	1.9	
						Mittel 1.8		

Zahl der Tage mit:

Niederschlag mindestens 1,0 mm . . . (●) ✕ ▲ △	17
Niederschlag mehr als 0,2 mm . . . " " " "	19
Niederschlag mindestens 0,1 mm . . . " " " "	19
Schnee mindestens 0,1 mm (✕)	3
Hagel (▲)	—
Graupeln (△)	—
Tau (D)	—
Reif (I)	3
Glatteis (S)	—
Nebel (≡)	2
Gewitter (nah ☒, fern T)	—
Wetterleuchten (<)	—

Niederschlag		Höhe der Schneedecke in cm 7 ^a	Bemerkungen	Tag
Höhe 7 ^a mm	Form und Zeit			
—	—	—	—	1
1.8	● ⁰ oft a—II + ztw. p	—	—	2
6.6	● ⁰ · 1 4 ³ / ₄ p—III—n	—	—	3
—	● ⁰ n	—	—	4
6.3	● ⁰ ztw. a—II—III	—	—	5
—	● ⁰ n	—	—	6
2.7	● ⁰ tr. 8 ³ / ₄ p—III	—	—	7
20.4	● ⁰ n, ● ⁰ · 1 I—II—III fast ohne Unterbrechung	—	—	8
0.4	● ⁰ n, ● ⁰ ztw. a, ● ⁰ tr. einz. p	—	—	9
4.7	● ⁰ oft a—II, ● ⁰ tr. ztw. p	—	—	10
3.4	● ⁰ ztw. p	—	—	11
3.0	● ⁰ n	—	—	12
7.0	● ⁰ n, ● ⁰ I + ztw. a	—	—	13
6.3	● ⁰ n, ● ⁰ ztw. 8 a—1 ¹ / ₄ p, ● ⁰ oft p	—	—	14
2.7	● ⁰ n, ● ⁰ I—II ztw., ● ⁰ II—4 p ztw.	—	—	15
—	—	—	—	16
—	—	—	—	17
—	—	—	—	18
0.3	● ⁰ 8—8 ³ / ₄ a, ● ⁰ tr. ztw. p	—	—	19
—	—	—	—	20
1.2	● ⁰ tr. 8—9 ¹ / ₄ a, ● ⁰ tr. abends	—	—	21
1.6	● ⁰ n	—	—	22
2.6	● ⁰ n, ● ⁰ I + ztw. a + p	—	—	23
—	—	—	—	24
—	—	—	—	25
—	—	—	—	26
2.5*	* n, * ⁰ a—II, fein *—3 p	—	—	27
6.8*	* n, * ⁰ I—II + ztw. p	—	—	28
1.9*	—	—	—	29
—	—	—	—	30
—	—	—	—	31
82.2	Monatssumme.	35	—	—

	7 ^a	2p	9p	Summe
N	4	2	—	6
NE	9	11	11	31
E	3	3	1	7
SE	2	1	1	4
S	—	2	1	3
SW	9	9	8	26
W	1	1	3	5
NW	3	2	4	9
Still	—	—	2	2

Instrumentarium.

		Verfertiger	No.	Höhe der Aufstellung in Metern
<i>Barometer:</i>	Gattung Gefäss	Fuess	922	über dem Meeres-Niveau 113,5
<i>Thermometer:</i>	trockenes	Fuess	163 a	über dem Erdboden
	befeuchtetes	Fuess	242 b	
	Maximum *	Fuess	4300	
	Minimum	Fuess	1248	
<i>Regenmesser:</i>	System	Hellmann	603	1,5
* Vom 5. Okt. 07 Max.-Therm. 2298.				

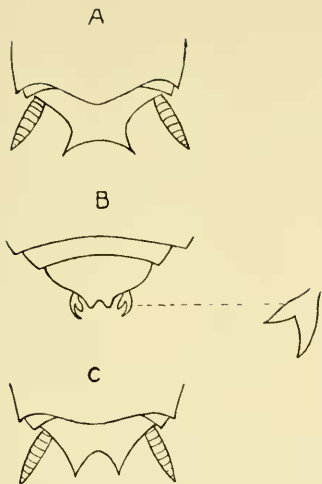


Fig. 1

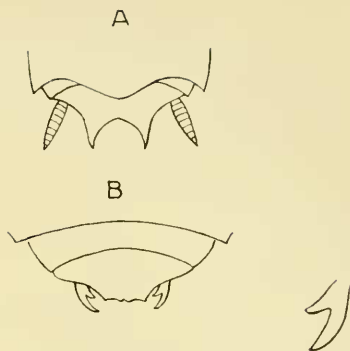


Fig. 2

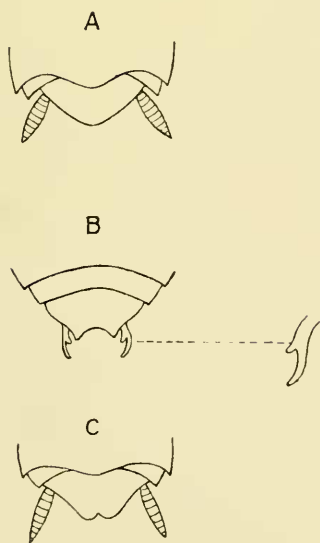


Fig. 3

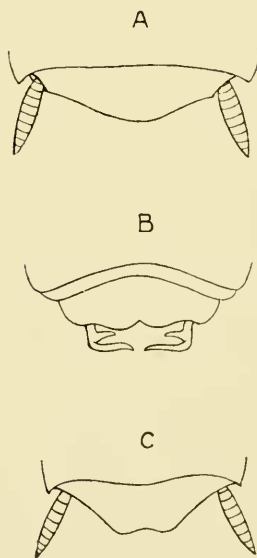


Fig. 4

Fig. 1. *Stylopyga furcifera* sp. n.

Fig. 2. *Stylopyga assimilis* sp. n.

Fig. 3. *Stylopyga nigerrima* sp. n.

Fig. 4. *Stylopyga manca*, Gerst.

A = supra-anal lamina, ♂.

B = sub-genital lamina, ♂.

C = supra-anal lamina ♀.



Fig. 1.

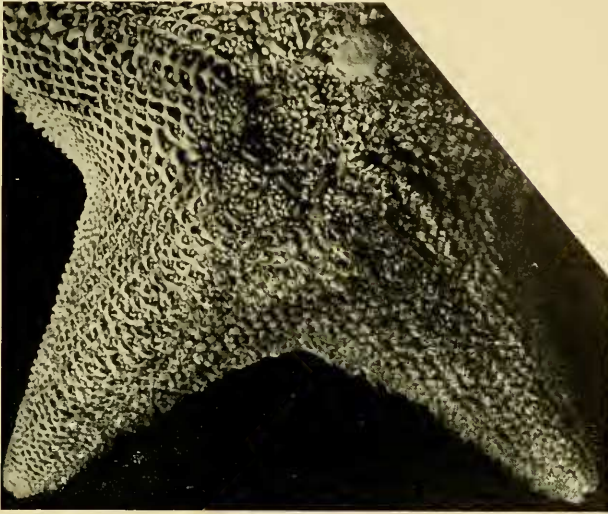


Fig. 2.

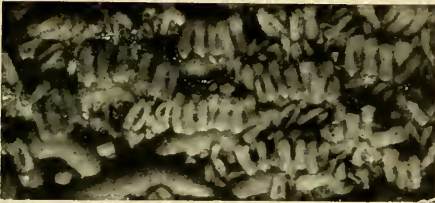
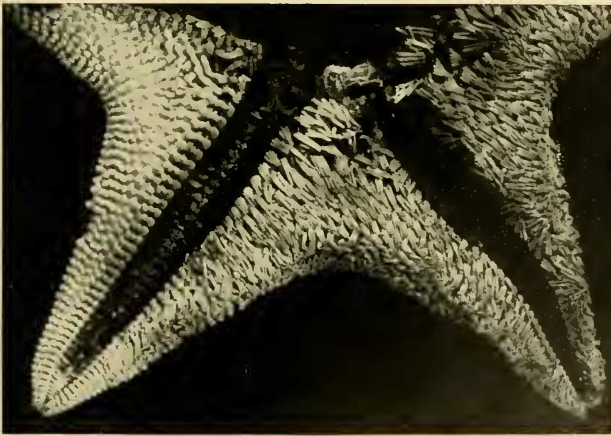


Fig. 3.



Fig. 4.



1b



1c

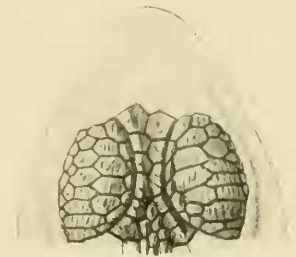


1a

Palmatogecko rangei n. g. n. sp. $\frac{1}{1}$; 1b under surface of hand $\frac{3}{1}$;
1c under surface of foot $\frac{3}{1}$.



2a



2b

Stenocercus seydi n. sp.

2a Head and anterior part of body $\frac{1}{1}$.

2b Upper view of head $\frac{2}{1}$.

1908-1909

61-62
Jahrgang 61
1908

JAHRBÜCHER
DES
NASSAUISCHEN VEREINS
FÜR
NATURKUNDE.

HERAUSGEGEBEN

VON

DR. ARNOLD PAGENSTECHER,

KÖNIGL. GEH. SANITÄTSRAT, DIREKTOR DES NASSAUISCHEN VEREINS FÜR NATURKUNDE.

JAHRGANG 61.

MIT 3 TAFELN UND 2 TEXTABBILDUNGEN.

WIESBADEN.
VERLAG VON J. F. BERGMANN.
1908.



Alle Druckschriften sind an den

„Nassauischen Verein für Naturkunde

Wiesbaden

Friedrichstrasse Nr. 1, part.“

zu richten.

Manuskripte für diese Jahrbücher bitten wir im **druck-**
fertigen Zustande jeweils bis spätestens zum **1. August** an
den Herausgeber einzusenden.

Verlag von J. F. BERGMANN, Wiesbaden.

Soeben erschien:

Die öffentliche Gesundheitspflege Wiesbadens.

Von der Stadt Wiesbaden der 33. Versammlung des Deutschen Vereins
für öffentliche Gesundheitspflege dargebotene

== Festschrift. ==

Im Auftrage des Magistrats

herausgegeben von

Dr. H. Rahlson,

Leiter des Statistischen Amtes der Stadt Wiesbaden.

Preis gebunden Mk. 8.—.

WIESBADEN.

Eine mit dem zweiten Preise der Stadt Wiesbaden ausgezeichnete Schrift.

Von

Dr. med. **Georg Böttcher** in Wiesbaden.

Mit einem Stadtplan, einem Plan der Umgebung und drei Illustrationen.*

Gebunden Mk. 2.40.

Statistischer Jahresbericht

der

Stadt Wiesbaden.

Herausgegeben vom Städtischen Statistischen Amt.

I. Jahrgang 1907.

Mk. 1.60.

Druck von Carl Ritter, G. m. b. H., Wiesbaden.

MBL/WHOI LIBRARY



WH 1A9J 2

